

The September 11th National Memorial Trail

The Northern Pilgrimage through Pennsylvania
A Trail Alignment Study



September 11th National Memorial Trail Alliance



REQUEST FOR RECOMMENDATIONS

AS a planning professional in your county, the Study Committee assembled by September 11 National Memorial Trail Alliance seeks your input for the Memorial Trail planning across Pennsylvania and potentially through your county.

The trail is now being developed between the Delaware River, the Flight 93 National Memorial near Shanksville, PA and the Great Allegheny Passage in Somerset County, PA. The Committee consists of a variety of experts drawn from the Board of Directors and others from across the entire 300 mile long trail corridor. The committee is being assisted by a consulting team led by Campbell Thomas & Company of Philadelphia, PA, working in concert with TPW Design Studios of York, PA, and Laird LA, PLLC of Roaring Springs, PA.

PROJECT DESCRIPTION - FALL 2014

The entire September 11th National Memorial Trail will provide a physical link connecting the three national memorials commemorating the tragic events that occurred at the Pentagon, the Flight 93 crash site near Shanksville, Pennsylvania, and the World Trade Center on September 11, 2001. The northerly Pennsylvania trail route from the Delaware River to the Flight 93 National Memorial and the Great Allegheny Passage will span about 300 miles, connecting communities, significant sites, and local memorials along the way. Once complete, the September 11th National Memorial Trail will total near 1,100-miles of non-motorized cycling and walking trail. It will serve as a recreational and transportation venue for promoting tourism, economic development, healthy bodies and minds, and cultural and educational opportunities for generations to come. In addition the trail route planning will include a related "on-road" route for motorized vehicle touring.

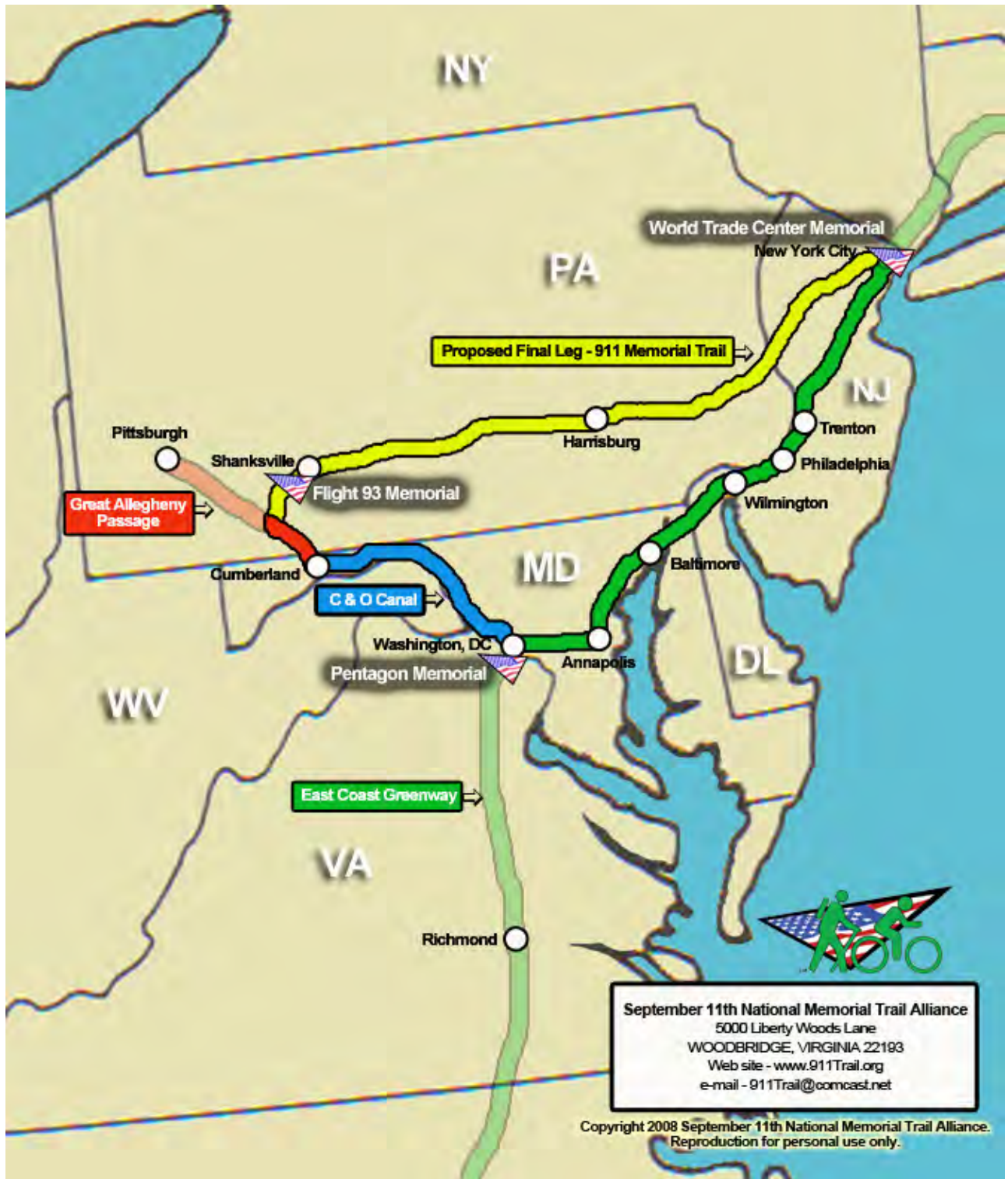
The committee now seeks your recommendations for important sites in your county and its communities that should be considered for inclusion with those connected by the trail route. In addition to local memorial sites, the committee is seeking recommendations for sites that represent the spirit and tell the stories of American Patriotism, Resilience and Perseverance that helped this Nation through the tragic events of the day and historically characterize the spirit that made the Nation what it is today. Your recommendations will assist the Committee in developing an optimal alignment through Pennsylvania for the Memorial Trail.

Please e-mail your recommendations to Bob Thomas, Campbell Thomas & Co. at rthomas@campbellthomas.com or Harry Murray, Campbell Thomas & Co. at h0s0m@aol.com.

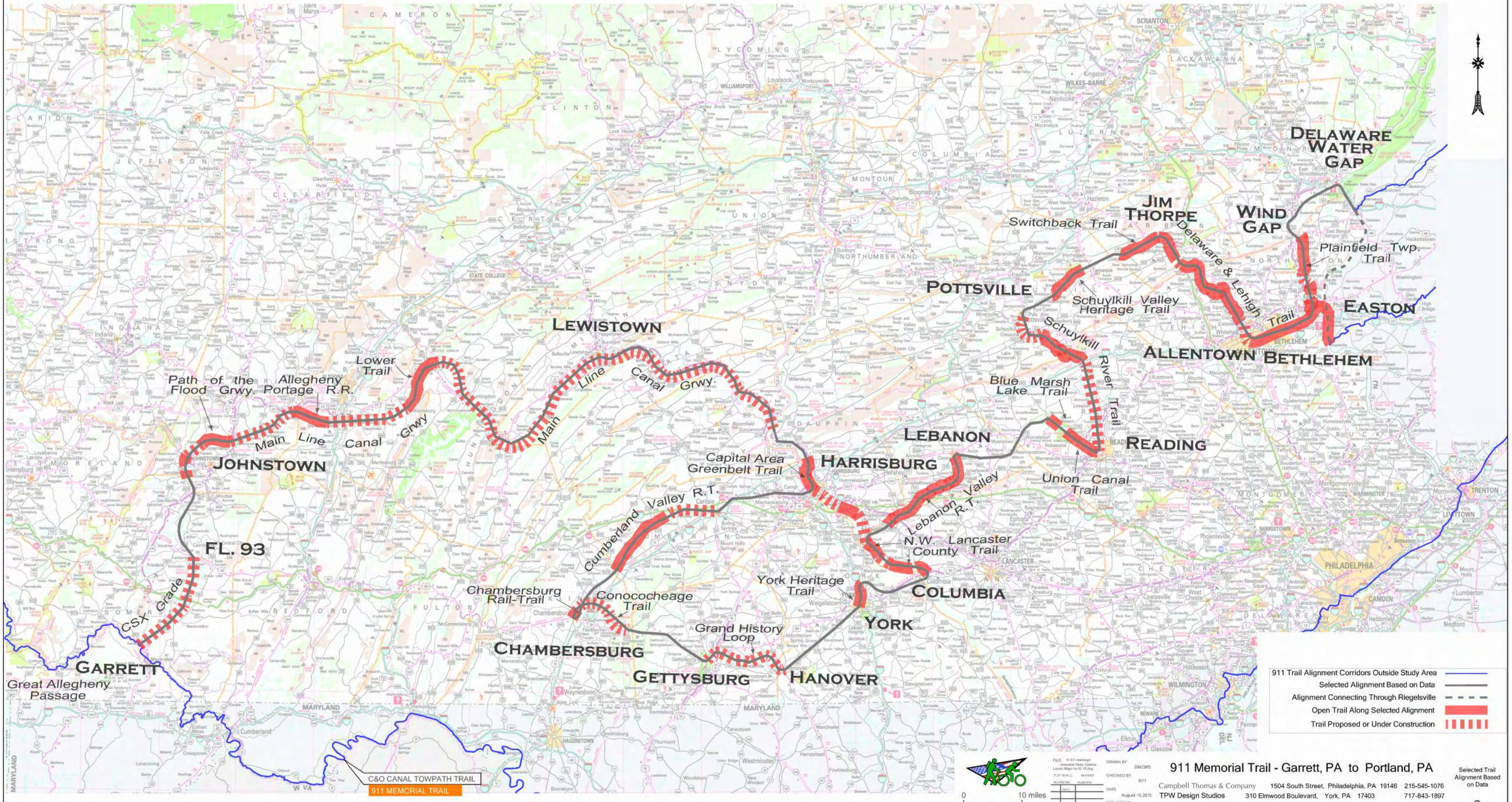
Your recommendations, time and assistance are greatly appreciated. On behalf of the Study Committee and the September 11th National Memorial Trail Alliance ...

THANK YOU!

This project is funded in part by a grant from the Community Conservation Partnership Program, Keystone Recreation, Park and Conservation Fund, under administration of the Pennsylvania Department of Conservation and Natural Resources, Bureau of Recreation and Conservation; in part by a grant from the Community Foundation for the Alleghenies; and the September 11th National Memorial Trail Alliance.



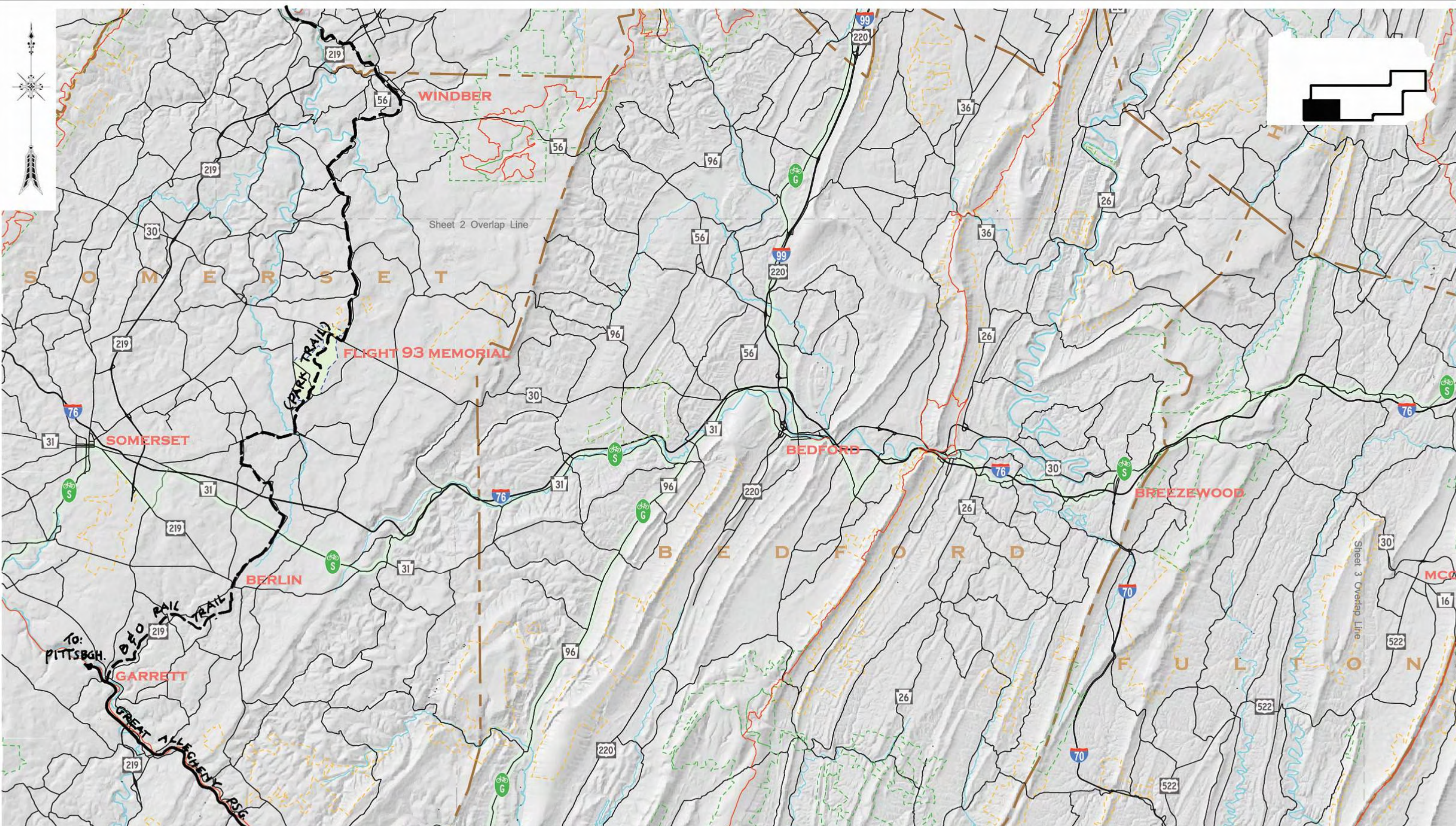
911 Steering Committee Selected Alignment Based on Data



FILE: 9111.mxd	DRAWN BY: DM/MS
DATE: August 10, 2015	CHECKED BY: RPT
PROJECT NO. 911.1926	

911 Memorial Trail - Garrett, PA to Portland, PA
 Campbell Thomas & Company 1504 South Street, Philadelphia, PA 19146 215-545-1076
 TPW Design Studios 310 Elmwood Boulevard, York, PA 17403 717-843-1897
 Laird Landscape Architecture 821 Dick School House Rd., Roaring Spring, PA 16673 814-312-1798

Selected Trail Alignment Based on Data



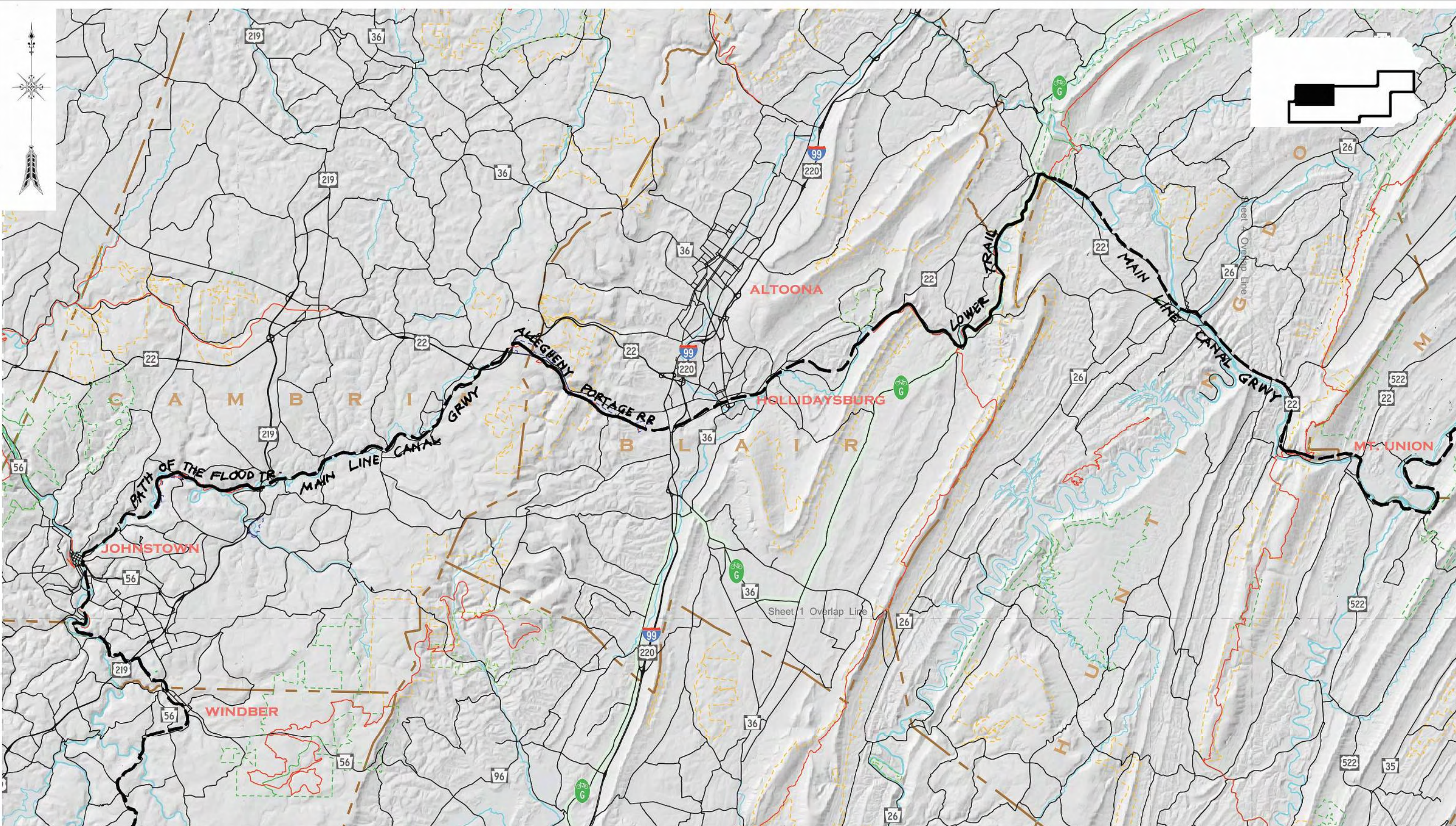
© 2014 CAMPBELL THOMAS & CO. ALL RIGHTS RESERVED

Existing Trail		PA Bike Route	
State Park		Existing M-U Trail	
State Forest		Existing Hiking Trail	
State Gameland		Proposed M-U Trail	
National Park		Proposed Hiking Trail	
		County Line	

FILE: h:\911-trail\dwgs\detail maps.dwg		DRAWN BY ZMS/DM	
PLOT SCALE: 1: 250,000		CHECKED BY RPT	
REVISIONS	REMARKS	DATE	DATE
			April 10, 2015
			PROJECT NO. 911-TRAIL

911 Trail			
Campbell Thomas & Company	1504 South Street, Philadelphia, PA 19146	215-545-1076	
TPW Design Studios	310 Elmwood Boulevard, York, PA 17403	717-843-1897	
Laird Landscape Architecture	821 Dick School House Rd., Roaring Spring, PA 16673	814-312-1798	

TITLE	Detailed Trail Alignment
DWG NO.	1-Trail



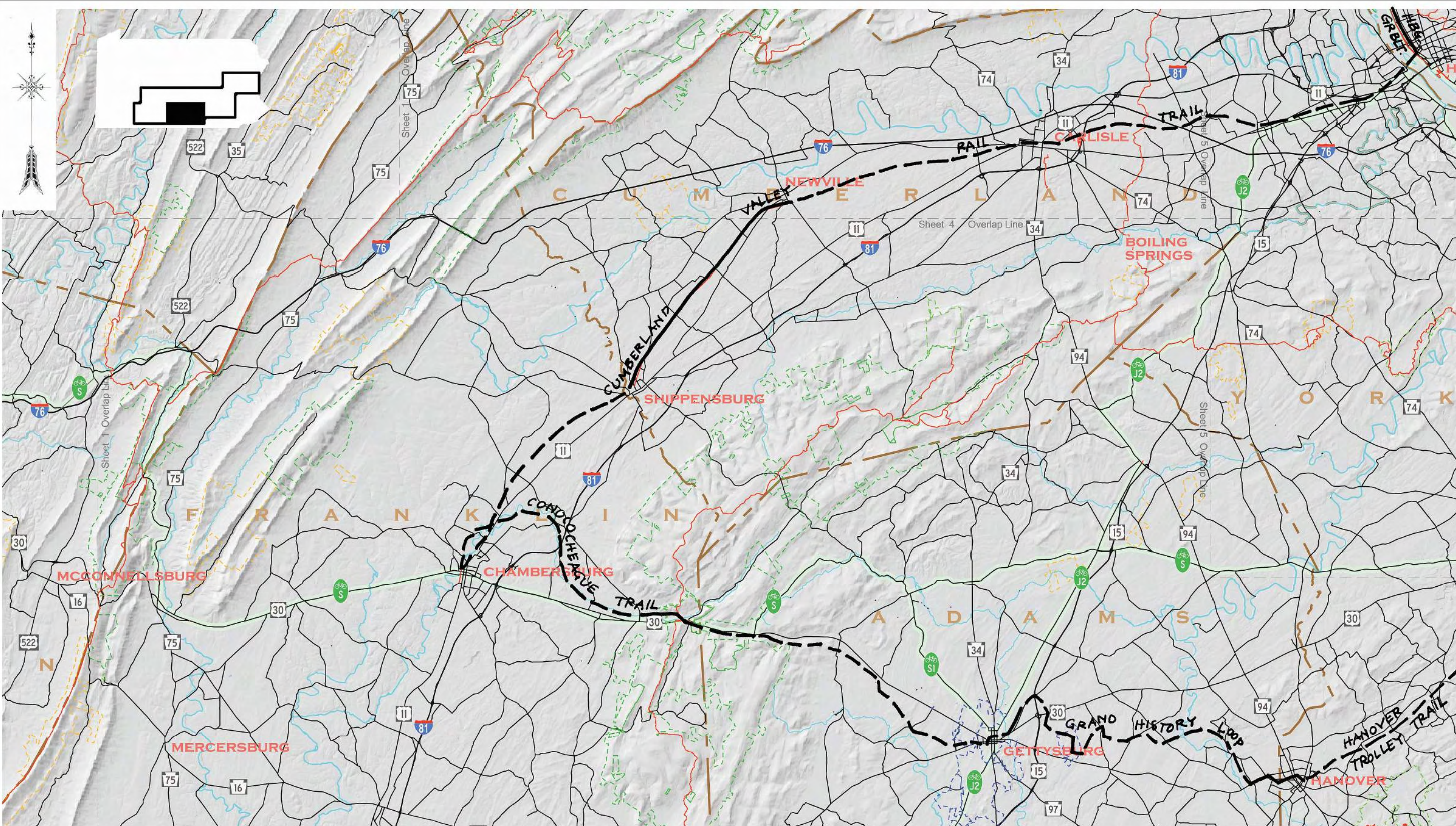
© 2014 CAMPBELL THOMAS & CO. ALL RIGHTS RESERVED

Existing Trail	PA Bike Route	
State Park	Existing M-U Trail	
State Forest	Existing Hiking Trail	
State Gameland	Proposed M-U Trail	
National Park	Proposed Hiking Trail	
	County Line	

FILE: h:\911-trail\dwgs\detail maps.dwg	DRAWN BY ZMS/DM
PLOT SCALE: 1:250,000	CHECKED BY RPT
REVISIONS	DATE
REMARKS	DATE
	PROJECT NO. 911-TRAI


911 Trail		
Campbell Thomas & Company	1504 South Street, Philadelphia, PA 19146	215-545-1076
TPW Design Studios	310 Elmwood Boulevard, York, PA 17403	717-843-1897
Laird Landscape Architecture	821 Dick School House Rd., Roaring Spring, PA 16673	814-312-1798

TITLE	Detailed Trail Alignment
DWG NO.	2-Trail



Existing Trail ———
State Park ———
State Forest ———
State Gameland ———
National Park ———

PA Bike Route — G —
Existing M-U Trail ———
Existing Hiking Trail ———
Proposed M-U Trail - - -
Proposed Hiking Trail - - -
County Line - - -

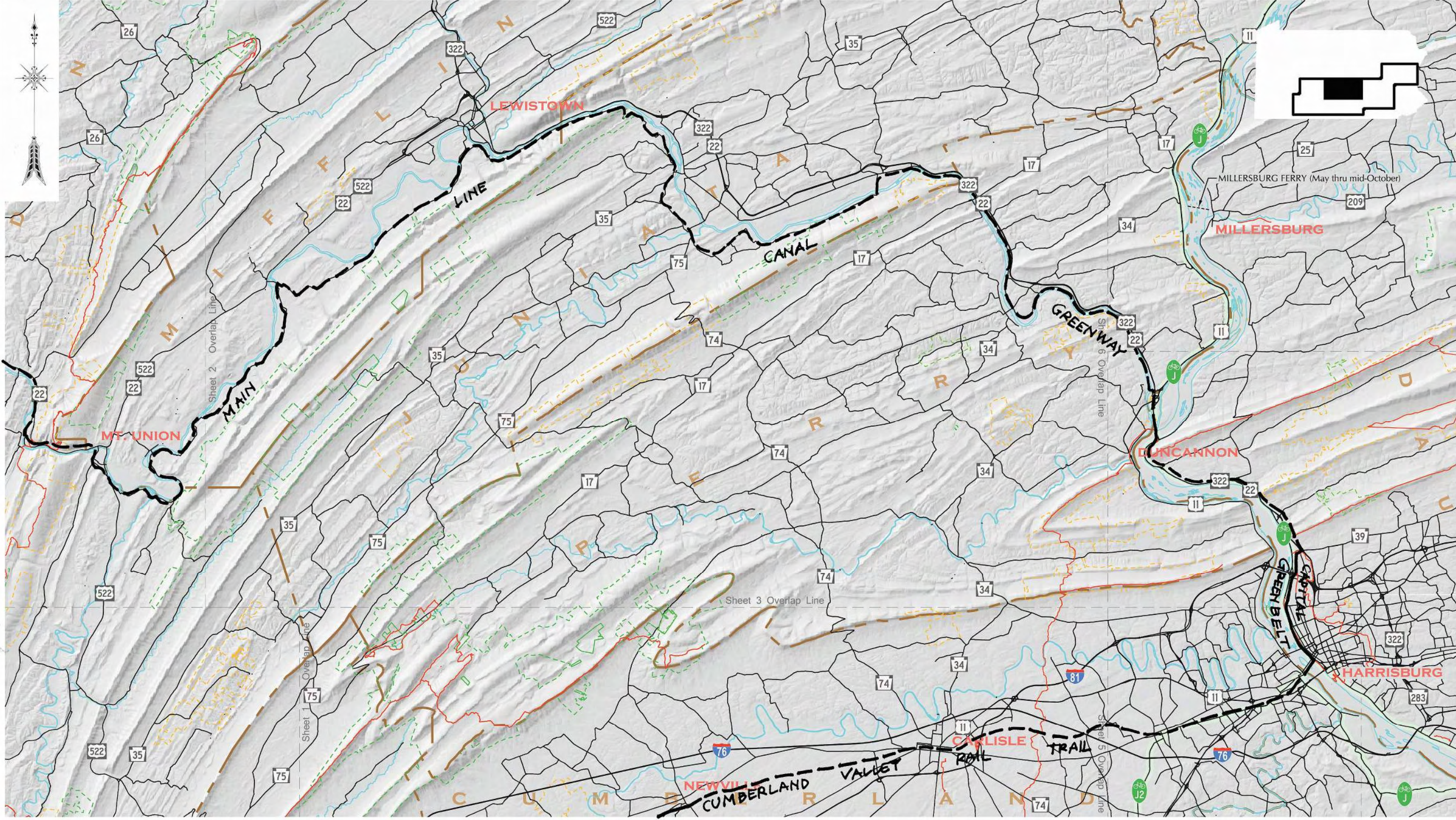

 0 5 miles

FILE: h:\911-trail\dwgs\ detail maps.dwg	DRAWN BY ZMS/DM
PLOT SCALE: 1:250,000	CHECKED BY RPT
REVISIONS	REMARKS
DATE	DATE
	April 10, 2015
	PROJECT NO. 911-TRAI

911 Trail	
Campbell Thomas & Company	1504 South Street, Philadelphia, PA 19146 215-545-1076
TPW Design Studios	310 Elmwood Boulevard, York, PA 17403 717-843-1897
Laird Landscape Architecture	821 Dick School House Rd., Roaring Spring, PA 16673 814-312-1798

TITLE	Detailed Trail Alignment
DWG NO.	3-Trail

© 2014 CAMPBELL THOMAS & CO. ALL RIGHTS RESERVED



© 2014 CAMPBELL THOMAS & CO. ALL RIGHTS RESERVED

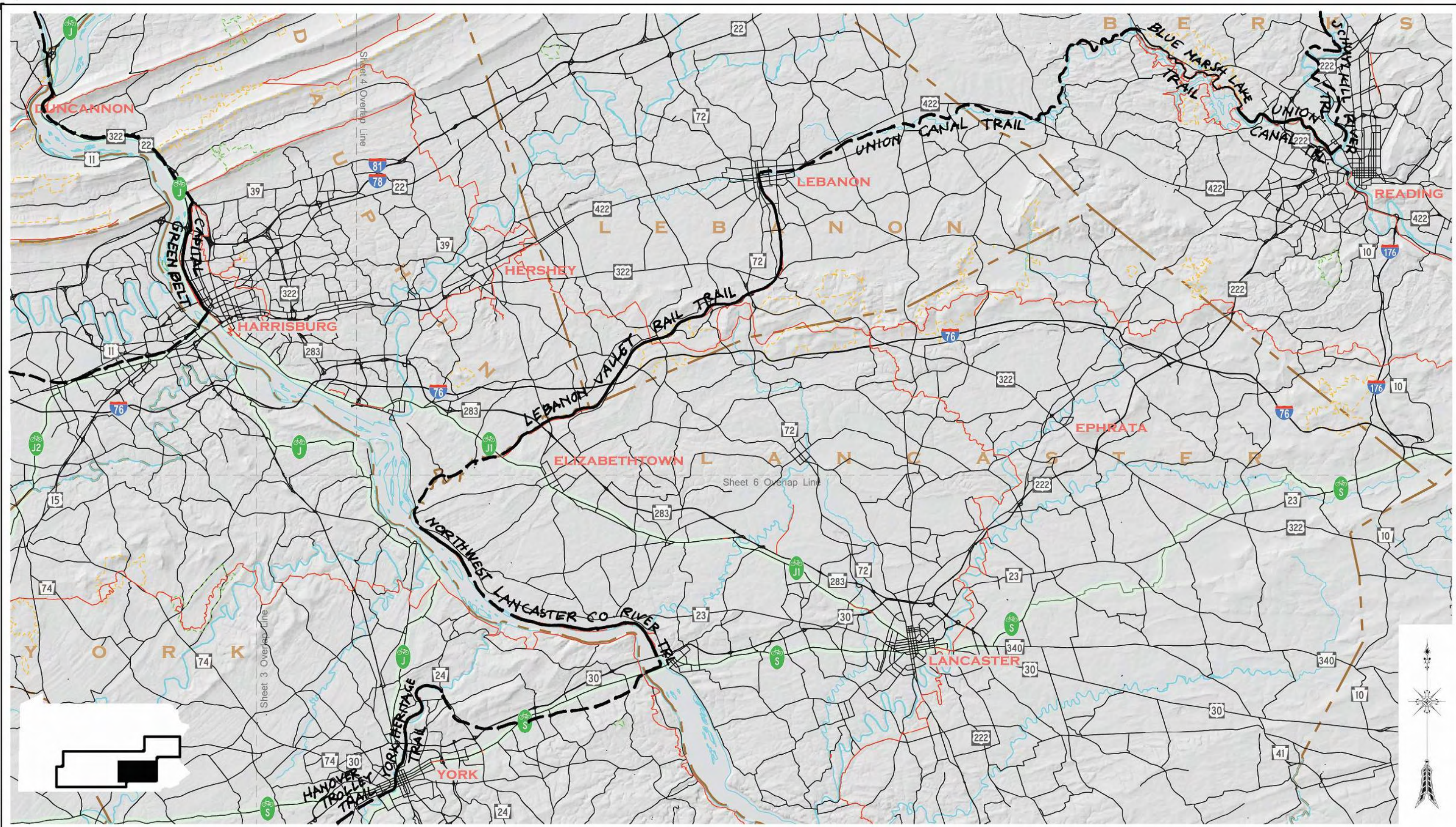
- | | | | |
|----------------|---|-----------------------|--|
| Existing Trail | — | PA Bike Route | |
| State Park | | Existing M-U Trail | |
| State Forest | | Existing Hiking Trail | |
| State Gameland | | Proposed M-U Trail | |
| National Park | | Proposed Hiking Trail | |
| | | County Line | |



FILE: h:\911-trail\dwgs\detail maps.dwg		DRAWN BY ZMS/DM	
PLOT SCALE: 1:250,000		CHECKED BY RPT	
REVISIONS	REMARKS	DATE	DATE
PROJECT NO. 911-TRAI		DATE April 10, 2015	

911 Trail			
Campbell Thomas & Company	1504 South Street, Philadelphia, PA 19146	215-545-1076	
TPW Design Studios	310 Elmwood Boulevard, York, PA 17403	717-843-1897	
Laird Landscape Architecture	821 Dick School House Rd., Roaring Spring, PA 16673	814-312-1798	

TITLE	Detailed Trail Alignment
DWG NO.	4-Trail



Existing Trail	PA Bike Route	
State Park	Existing M-U Trail	
State Forest	Existing Hiking Trail	
State Gameland	Proposed M-U Trail	
National Park	Proposed Hiking Trail	
	County Line	

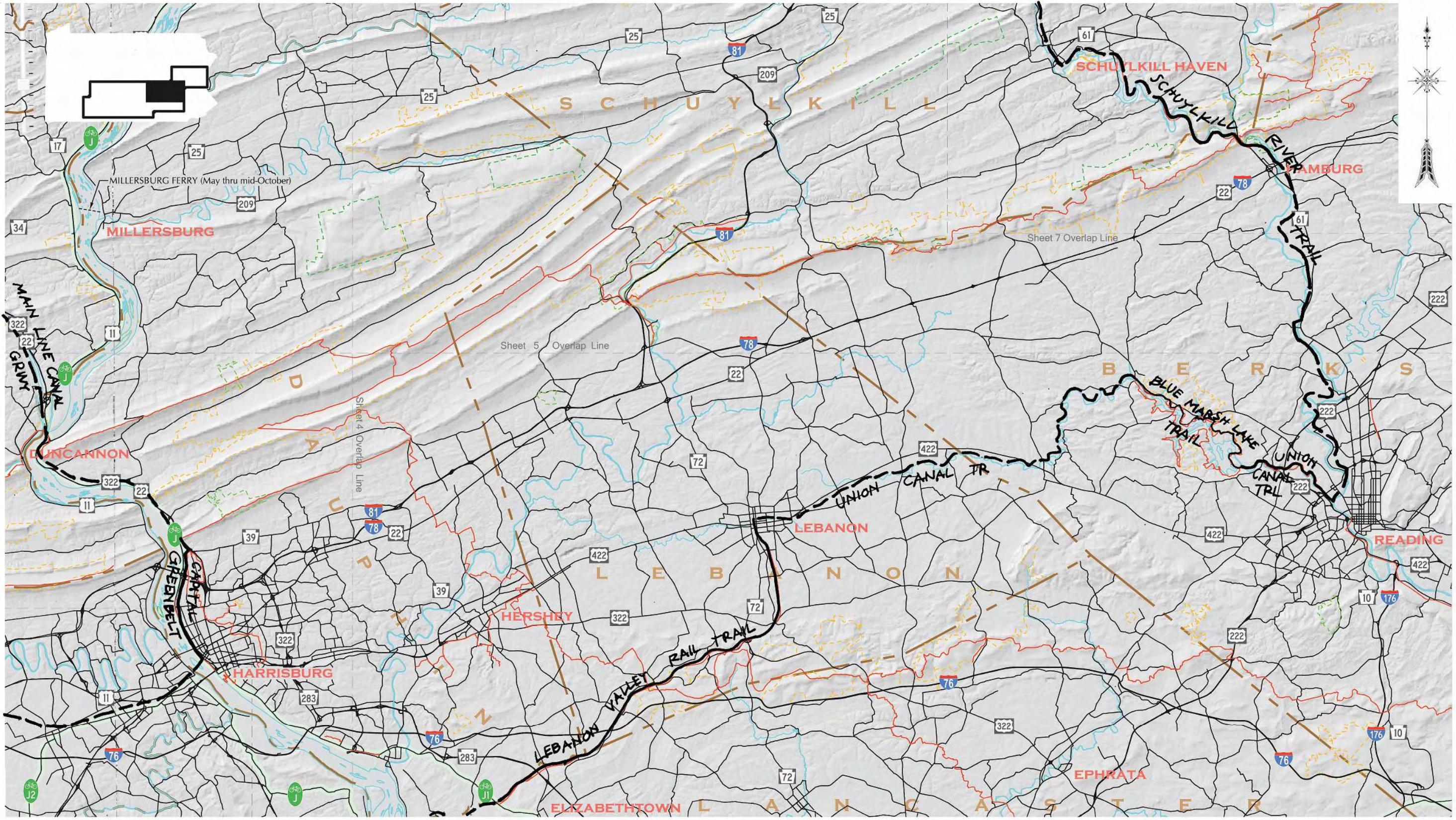
FILE: h:\911-trail\dwgs\detail maps.dwg	DRAWN BY: ZMS/DM
PLOT SCALE: 1:250,000	CHECKED BY: RPT
REVISIONS	REMARKS
DATE	DATE
	April 10, 2015
	PROJECT NO. 911-TRAI

911 Trail



Campbell Thomas & Company 1504 South Street, Philadelphia, PA 19146 215-545-1076
 TPW Design Studios 310 Elmwood Boulevard, York, PA 17403 717-843-1897
 Laird Landscape Architecture 821 Dick School House Rd., Roaring Spring, PA 16673 814-312-1798

TITLE: **Detailed Trail Alignment**
 DWG NO.: **5-Trail**

© 2014 CAMPBELL THOMAS & CO. ALL RIGHTS RESERVED



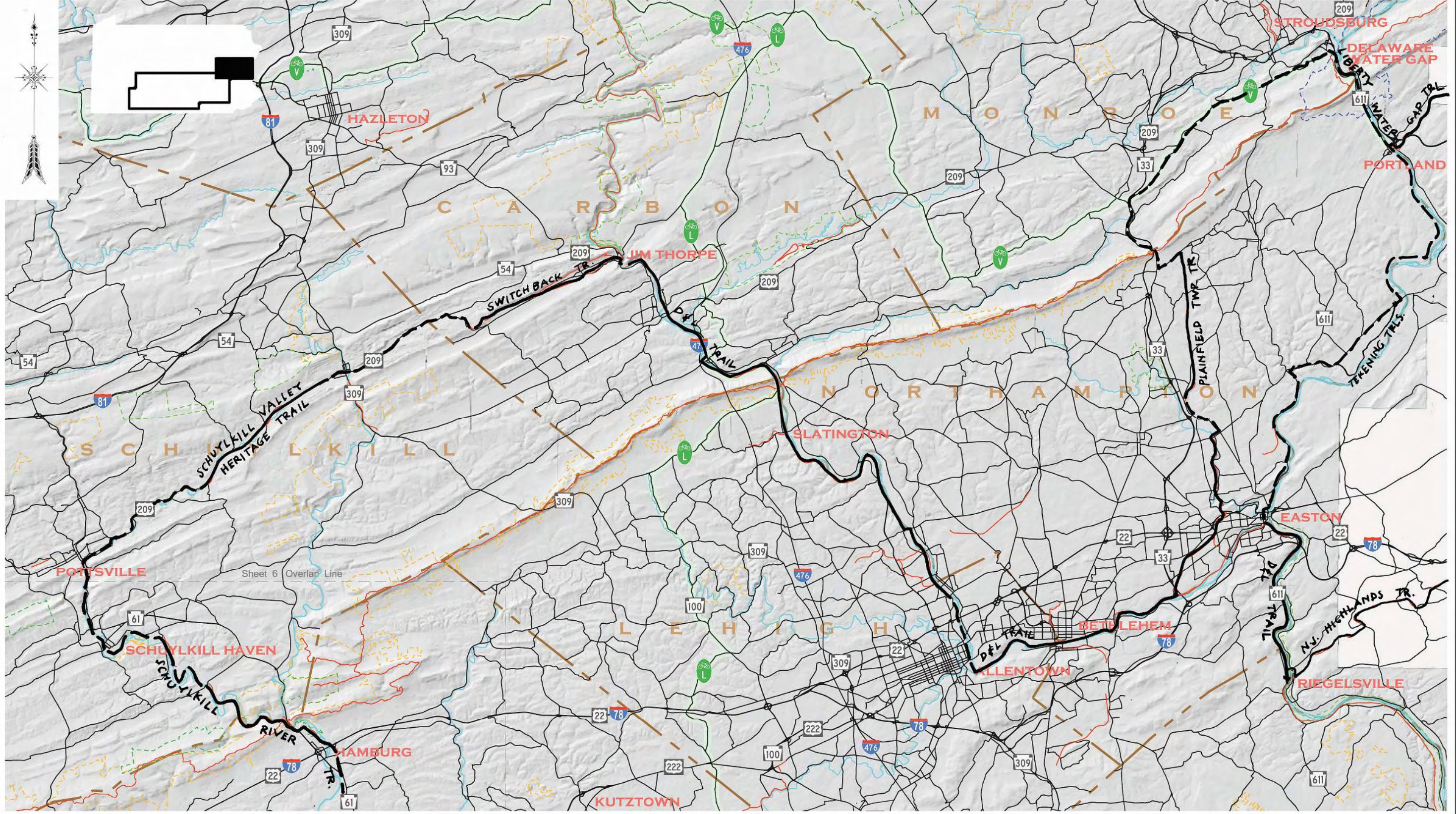
© 2014 CAMPBELL THOMAS & CO. ALL RIGHTS RESERVED

Existing Trail	PA Bike Route	
State Park	Existing M-U Trail	
State Forest	Existing Hiking Trail	0  5 miles
State Gameland	Proposed M-U Trail	
National Park	Proposed Hiking Trail	
	County Line	

FILE: h:\911-trail\dwgs\detail maps.dwg	DRAWN BY ZMS/DM
PLOT SCALE: 1:250,000	CHECKED BY RPT
REVISIONS	DATE

911 Trail	
Campbell Thomas & Company	1504 South Street, Philadelphia, PA 19146 215-545-1076
TPW Design Studios	310 Elmwood Boulevard, York, PA 17403 717-843-1897
Laird Landscape Architecture	821 Dick School House Rd., Roaring Spring, PA 16673 814-312-1798

TITLE	Detailed Trail Alignment
DWG NO.	6-Trail



© 2014 CAMPBELL THOMAS & CO. ALL RIGHTS RESERVED

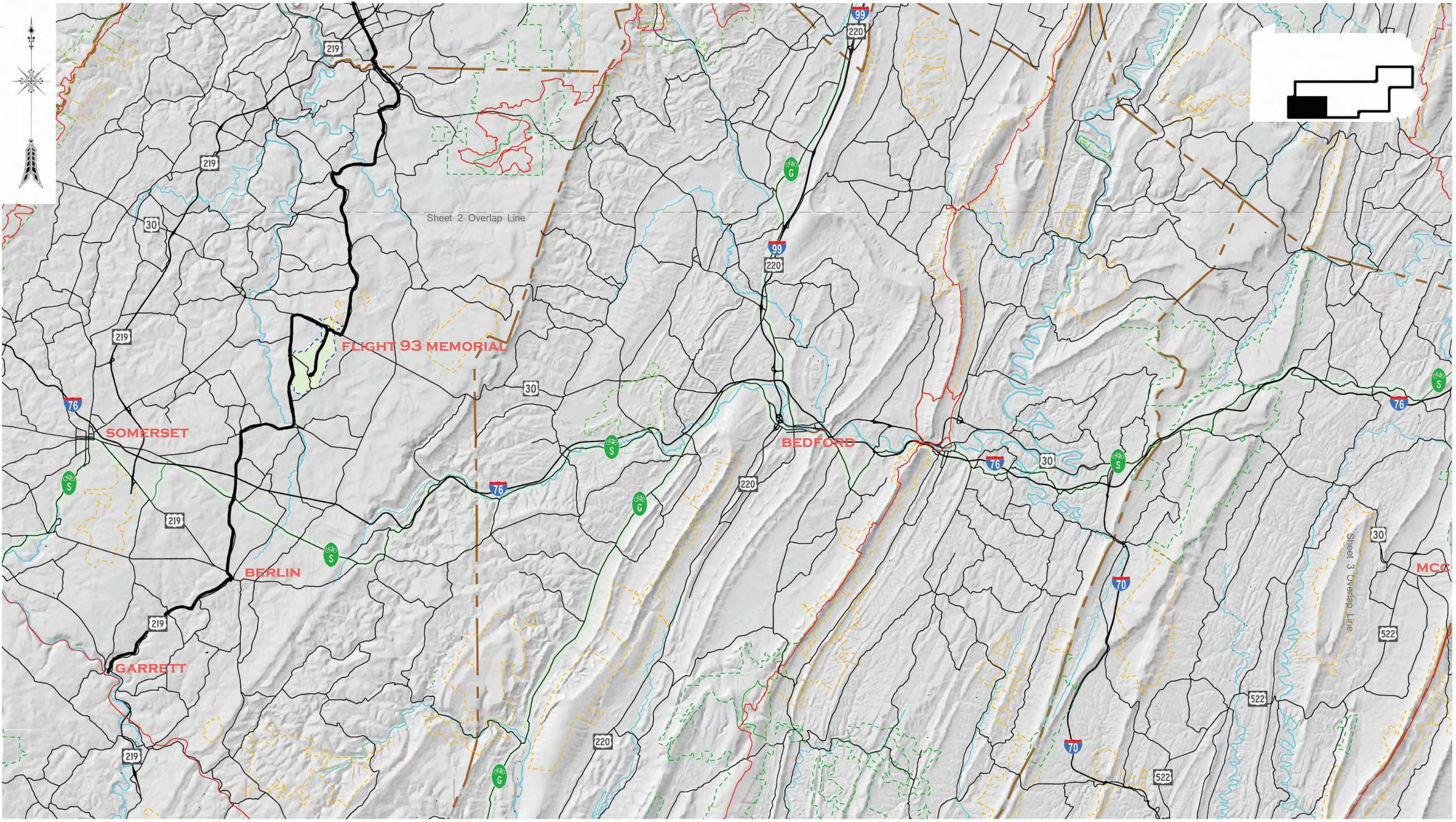
Existing Trail	—	PA Bike Route	
State Park		Existing M-U Trail	
State Forest		Existing Hiking Trail	
State Gameland		Proposed M-U Trail	
National Park		Proposed Hiking Trail	
		County Line	

0 5 miles

FILE: h:\911-trail\dwgs\ detail maps.dwg	DRAWN BY ZMS/DM
PLOT SCALE: 1:250,000	CHECKED BY RPT
REVISIONS	REMARKS
DATE	DATE
	April 10, 2015
	PROJECT NO. 911-TRAI

911 Trail		
Campbell Thomas & Company	1504 South Street, Philadelphia, PA 19146	215-545-1076
TPW Design Studios	310 Elmwood Boulevard, York, PA 17403	717-843-1897
Laird Landscape Architecture	821 Dick School House Rd., Roaring Spring, PA 16673	814-312-1798

TITLE	Detailed Trail Alignment
DWG NO.	7-Trail



© 2014 CAMPBELL THOMAS & CO. ALL RIGHTS RESERVED

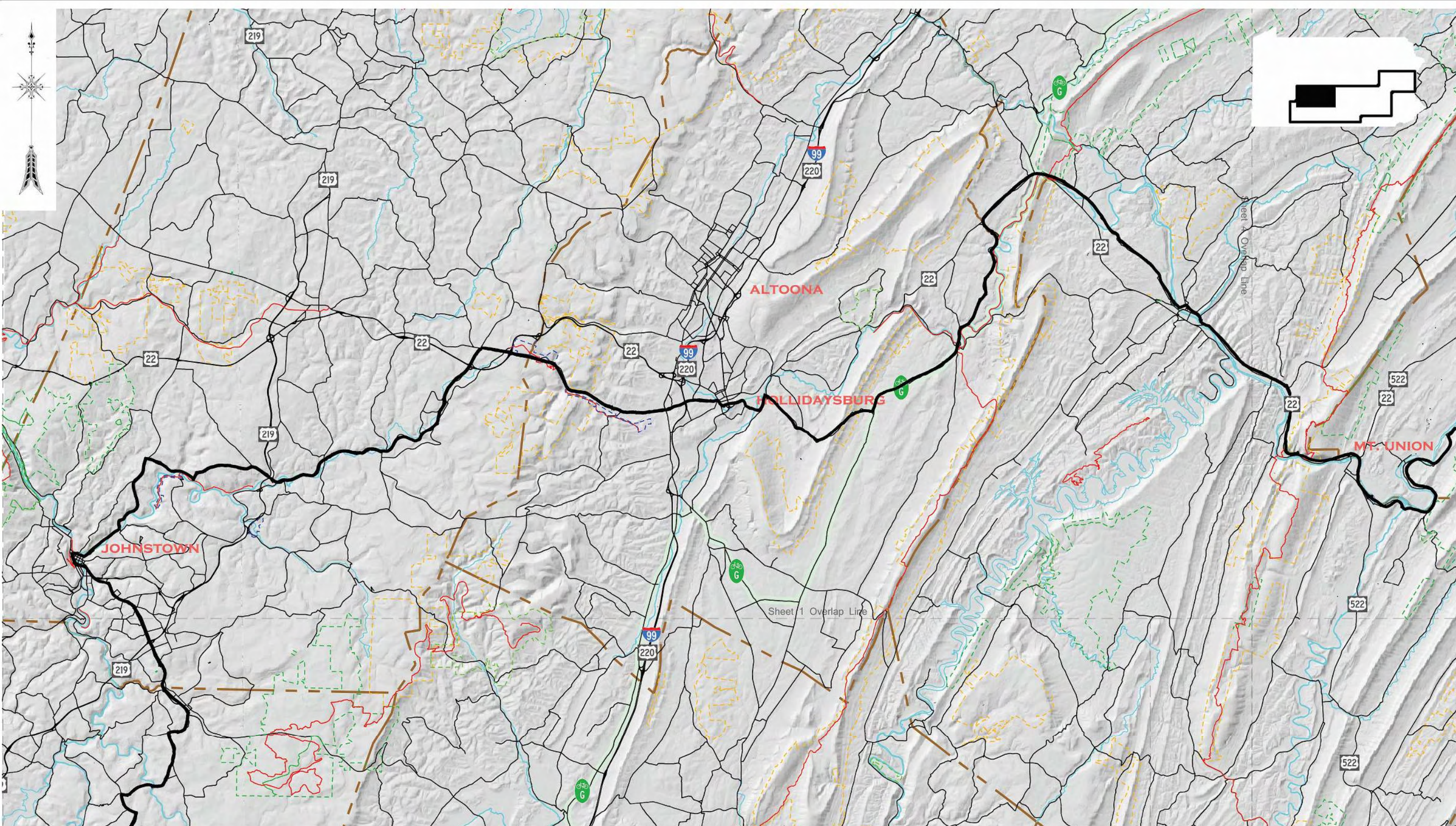
Existing Trail		PA Bike Route	
State Park		Back Roads Driving and Motorcycle Route	
State Forest		County Line	
State Gameland			
National Park			

0 5 miles

FILE: h:\911-trail\dwgs\detail maps.dwg		DRAWN BY ZMS/DM	
PLOT SCALE: 1:250,000		CHECKED BY RPT	
REVISIONS		DATE	
DATE	REMARKS	DATE	PROJECT NO.
		April 10, 2015	911-TRAI


911 Trail			
Campbell Thomas & Company		1504 South Street, Philadelphia, PA 19146 215-545-1076	
TPW Design Studios		310 Elmwood Boulevard, York, PA 17403 717-843-1897	
Laird Landscape Architecture		821 Dick School House Rd., Roaring Spring, PA 16673 814-312-1798	


TITLE	Detailed Road Alignment
DWG NO.	1-Motoring



© 2014 CAMPBELL THOMAS & CO. ALL RIGHTS RESERVED

Existing Trail		PA Bike Route	
State Park		Back Roads Driving and Motorcycle Route	
State Forest		County Line	
State Gameland			
National Park			

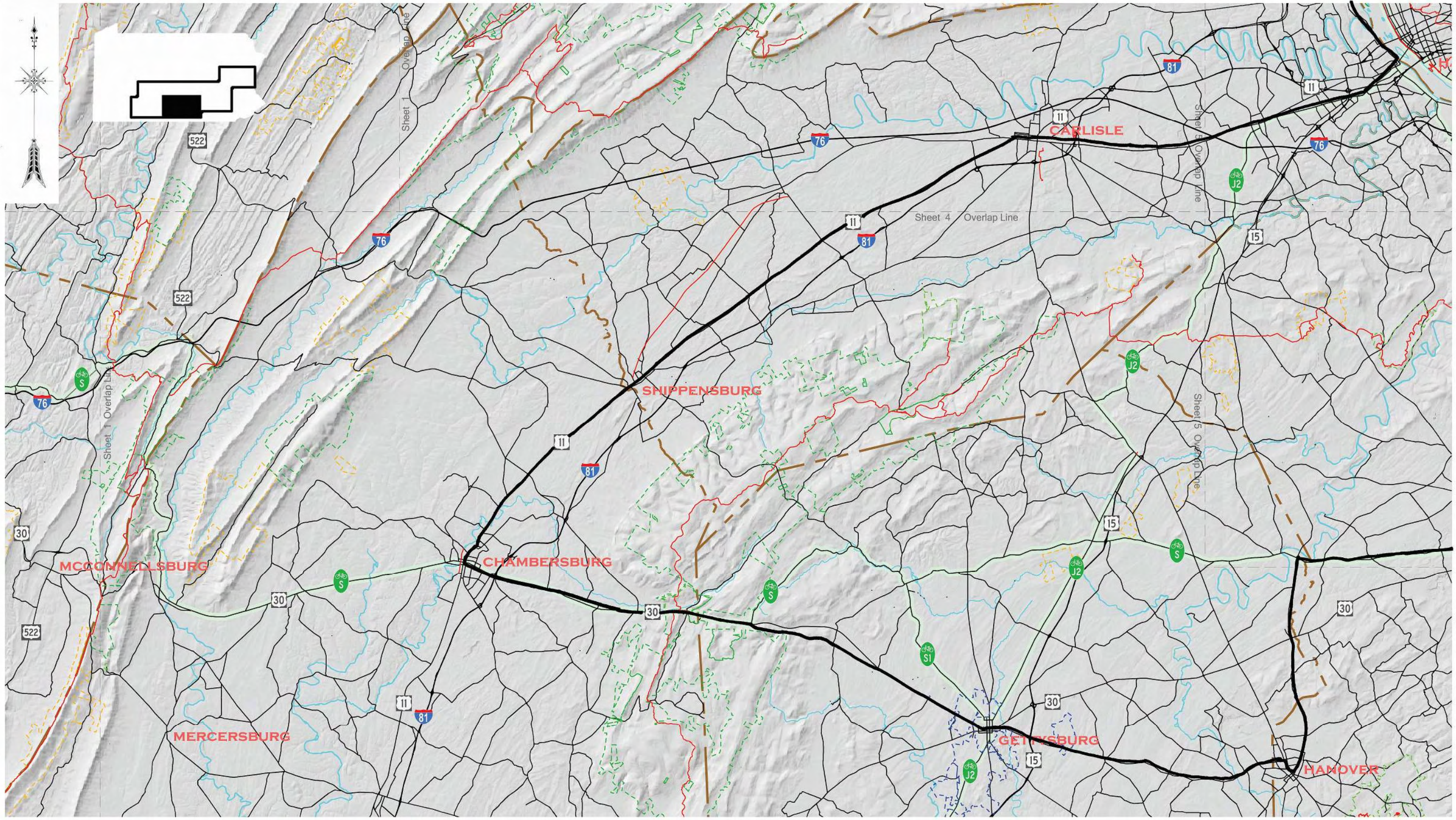


0  5 miles

FILE: h:\911-trail\dwgs\detail maps.dwg		DRAWN BY ZMS/DM	
PLOT SCALE: 1:250,000		CHECKED BY RPT	
REVISIONS	REMARKS	DATE	DATE
			April 10, 2015
		PROJECT NO.	911-TRAI

911 Trail			
Campbell Thomas & Company		1504 South Street, Philadelphia, PA 19146	215-545-1076
TPW Design Studios		310 Elmwood Boulevard, York, PA 17403	717-843-1897
Laird Landscape Architecture		821 Dick School House Rd., Roaring Spring, PA 16673	814-312-1798

TITLE	Detailed Road Alignment
DWG NO.	2-Motoring



- Existing Trail —
- State Park
- State Forest
- State Gameland
- National Park

- PA Bike Route —
- Back Roads Driving and Motorcycle Route —
- County Line - - -

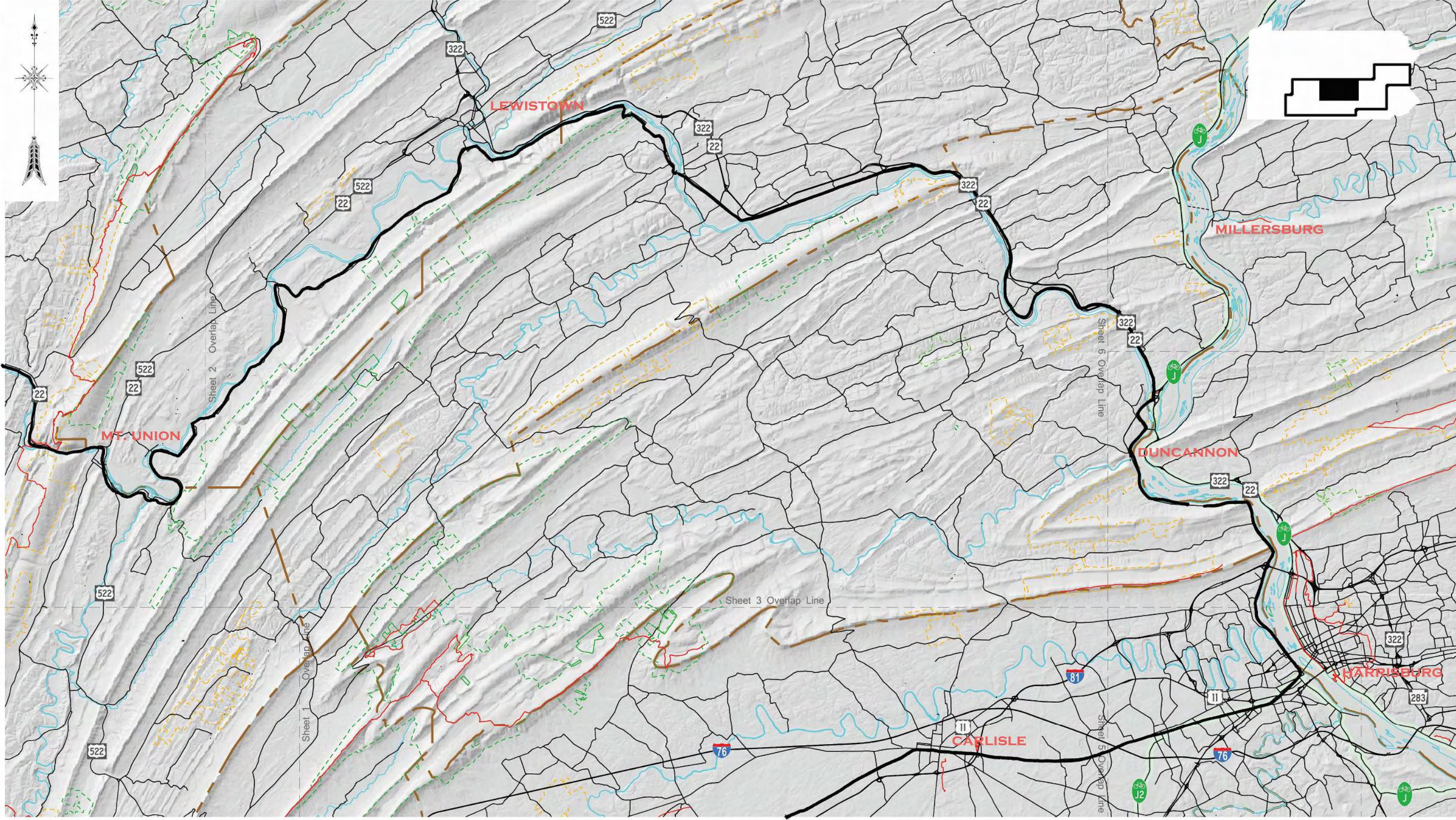


FILE: h:\911-trail\dwgs\detail maps.dwg		DRAWN BY ZMS/DM	
PLOT SCALE: 1:250,000		CHECKED BY RPT	
REVISIONS		DATE	
		PROJECT NO. 911-TRAI	

911 Trail			
Campbell Thomas & Company		1504 South Street, Philadelphia, PA 19146	
TPW Design Studios		310 Elmwood Boulevard, York, PA 17403	
Laird Landscape Architecture		821 Dick School House Rd., Roaring Spring, PA 16673	
		215-545-1076	
		717-843-1897	
		814-312-1798	

TITLE	Detailed Road Alignment
DWG NO.	3-Motoring

© 2014 CAMPBELL THOMAS & CO. ALL RIGHTS RESERVED



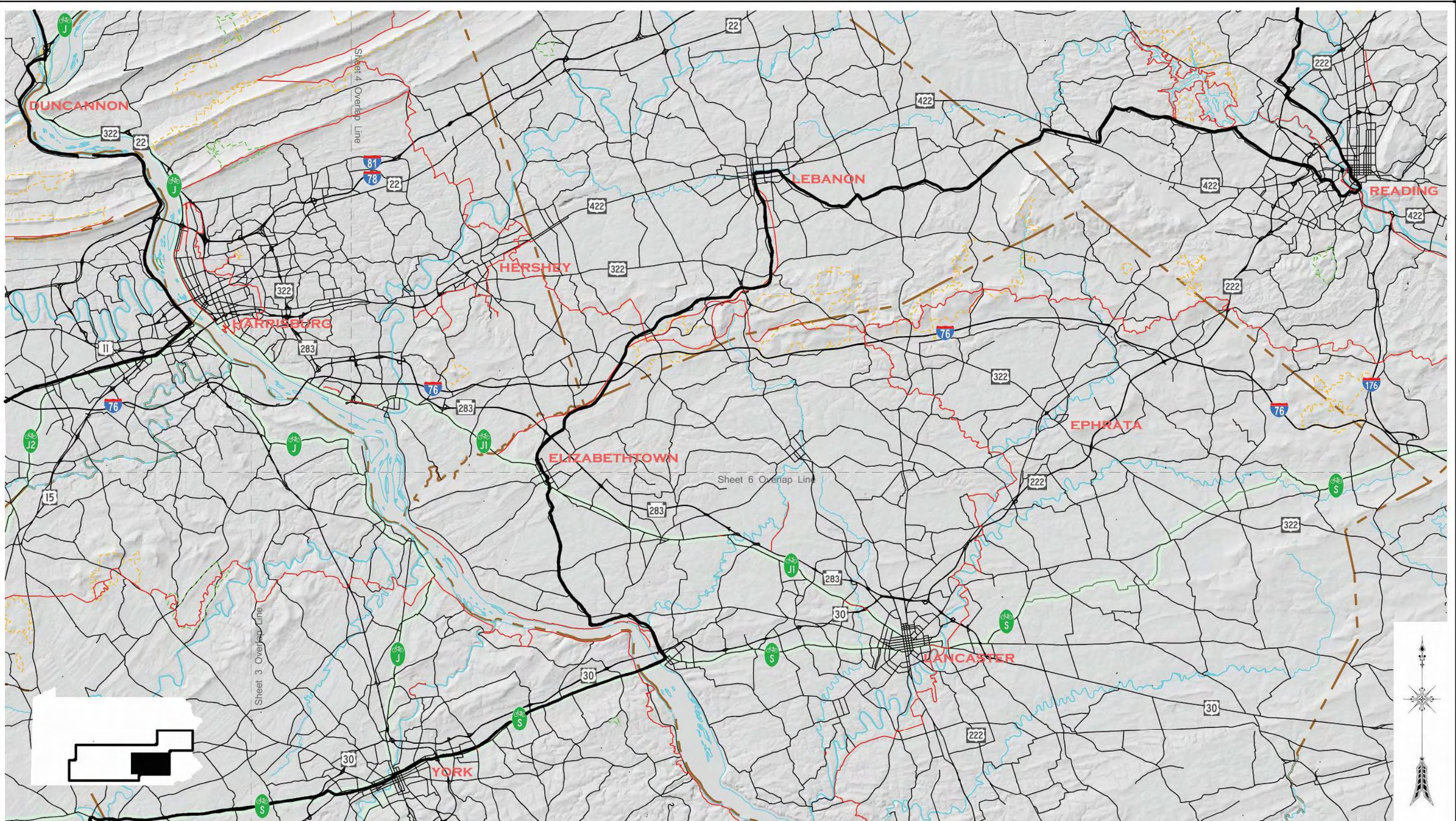
© 2014 CAMPBELL THOMAS & CO. ALL RIGHTS RESERVED

Existing Trail		PA Bike Route	
State Park		Back Roads Driving and Motorcycle Route	
State Forest		County Line	
State Gameland			
National Park			

FILE: h:\911-trail\dwgs\detail maps.dwg		DRAWN BY ZMS/DM	
PLOT SCALE: 1:250,000		CHECKED BY RPT	
REVISIONS		DATE	
DATE	REMARKS	DATE	PROJECT NO.
		April 10, 2015	911-TRAI

911 Trail			
Campbell Thomas & Company	1504 South Street, Philadelphia, PA 19146	215-545-1076	
TPW Design Studios	310 Elmwood Boulevard, York, PA 17403	717-843-1897	
Laird Landscape Architecture	821 Dick School House Rd., Roaring Spring, PA 16673	814-312-1798	

TITLE	Detailed Road Alignment
DWG. NO.	4-Motoring



© 2014 CAMPBELL THOMAS & CO. ALL RIGHTS RESERVED

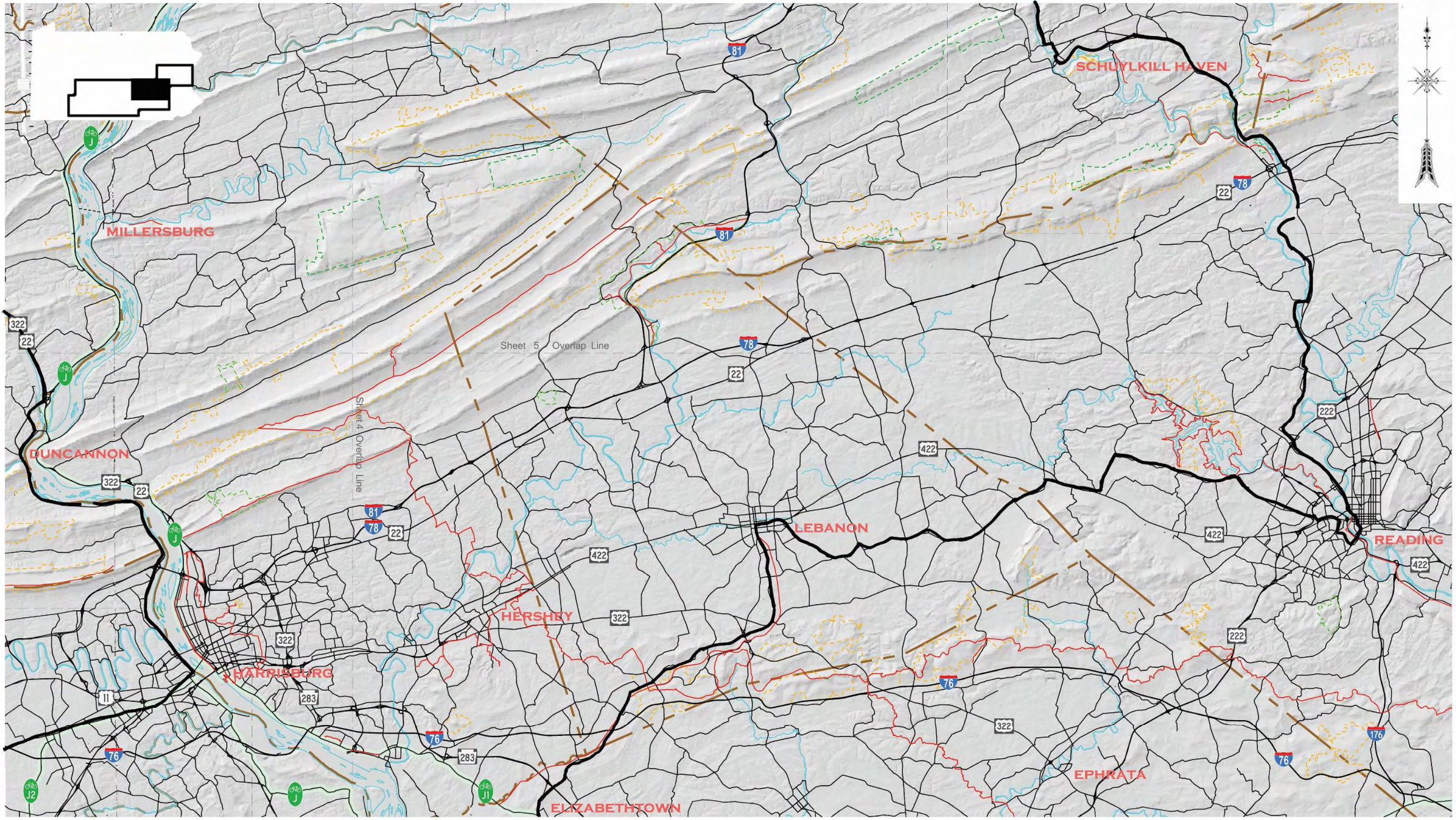
Existing Trail		PA Bike Route	
State Park		Back Roads Driving and Motorcycle Route	
State Forest		County Line	
State Gameland			
National Park			

0 5 miles

FILE: h:\911-trail\dwgs\detail maps.dwg		DRAWN BY ZMS/DM	
PLOT SCALE: 1:250,000		CHECKED BY RPT	
REVISIONS		DATE	
DATE	REMARKS	DATE	PROJECT NO.
		April 10, 2015	911-TRAI

911 Trail			
Campbell Thomas & Company	1504 South Street, Philadelphia, PA 19146	215-545-1076	
TPW Design Studios	310 Elmwood Boulevard, York, PA 17403	717-843-1897	
Laird Landscape Architecture	821 Dick School House Rd., Roaring Spring, PA 16673	814-312-1798	

TITLE	Detailed Road Alignment
DWG NO.	5-Motoring



© 2014 CAMPBELL THOMAS & CO. ALL RIGHTS RESERVED

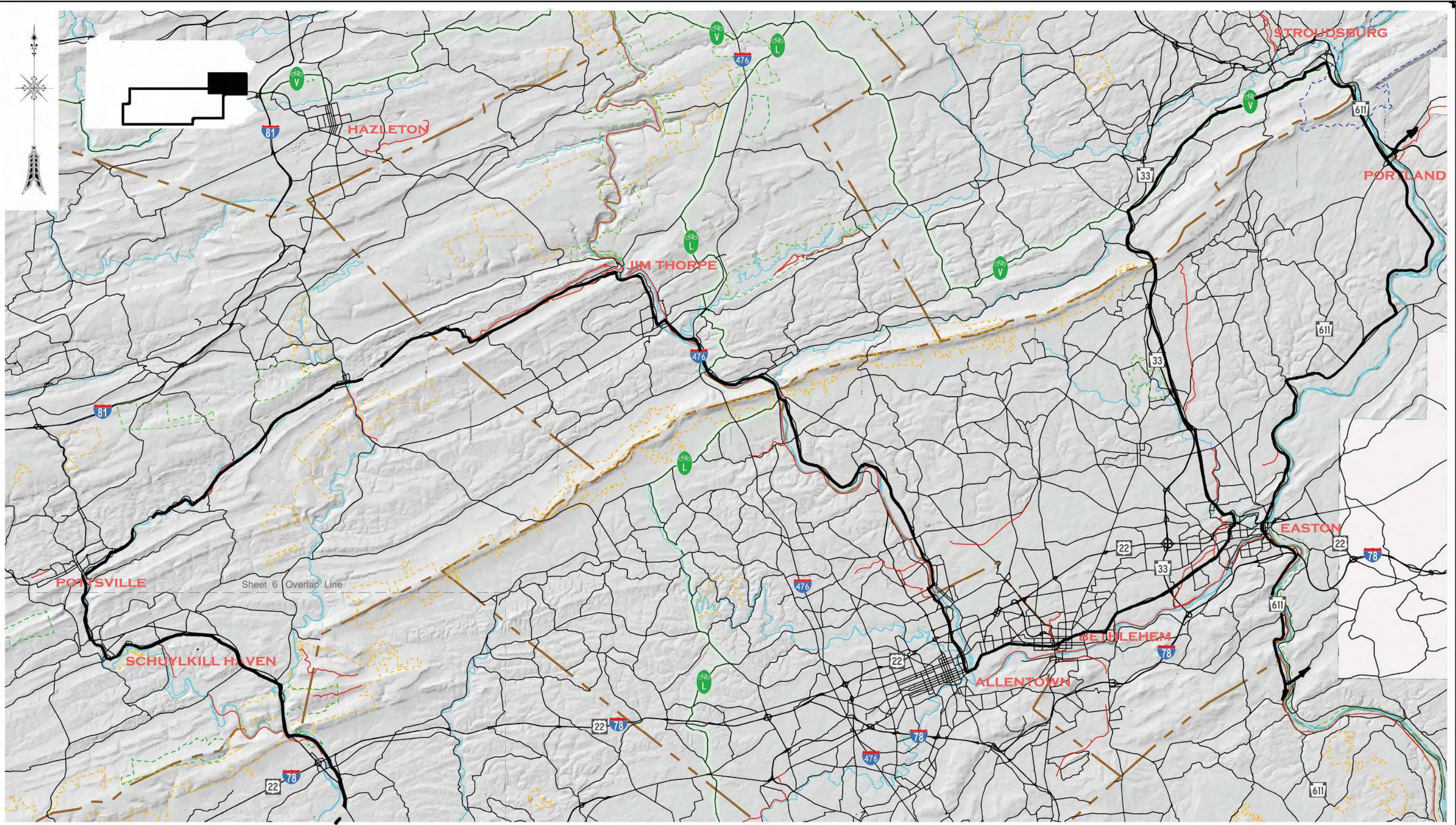
Existing Trail		PA Bike Route	
State Park		Back Roads Driving and Motorcycle Route	
State Forest		County Line	
State Gameland			
National Park			

0 5 miles

FILE: h:\911-trail\dwgs\detail maps.dwg		DRAWN BY ZMS/DM	
PLOT SCALE: 1:250,000		CHECKED BY RPT	
REVISIONS		DATE	
DATE	REMARKS	DATE	PROJECT NO.
		April 10, 2015	911-TRAI


911 Trail			
Campbell Thomas & Company		1504 South Street, Philadelphia, PA 19146	
TPW Design Studios		310 Elmwood Boulevard, York, PA 17403	
Laird Landscape Architecture		821 Dick School House Rd., Roaring Spring, PA 16673	
215-545-1076	717-843-1897	814-312-1798	


TITLE	Detailed Road Alignment
DWG NO.	6-Motoring



© 2014 CAMPBELL THOMAS & CO. ALL RIGHTS RESERVED

Existing Trail		PA Bike Route	
State Park		Back Roads Driving and Motorcycle Route	
State Forest		County Line	
State Gameland			
National Park			



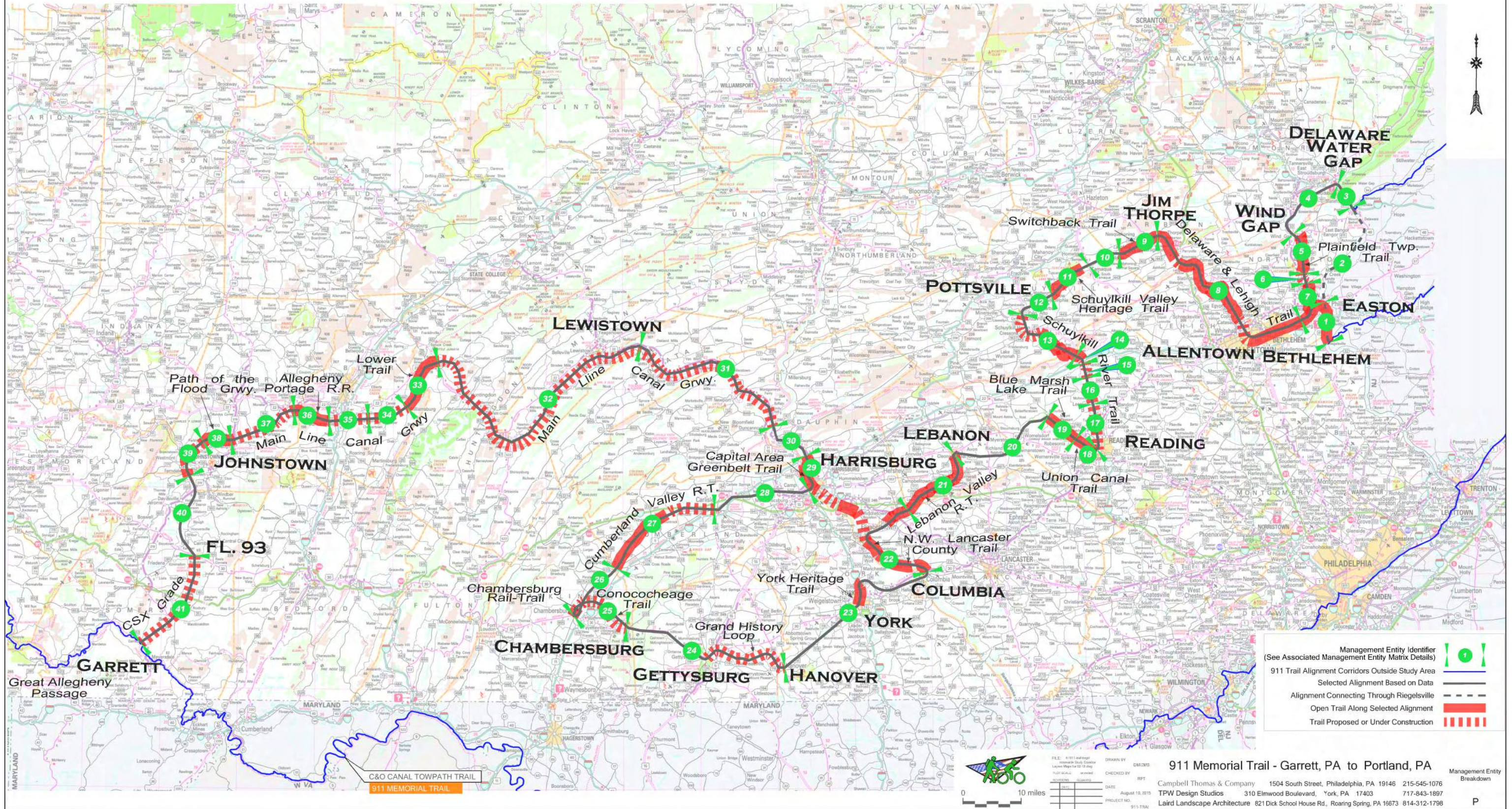
0  5 miles

FILE: h:\911-trail\dwgs\detail maps.dwg		DRAWN BY ZMS/DM	
PLOT SCALE: 1:250,000		CHECKED BY RPT	
REVISIONS		DATE	
DATE	REMARKS	DATE	PROJECT NO.
		April 10, 2015	911-TRAI

911 Trail			
Campbell Thomas & Company		1504 South Street, Philadelphia, PA 19146	
TPW Design Studios		310 Elmwood Boulevard, York, PA 17403	
Laird Landscape Architecture		821 Dick School House Rd., Roaring Spring, PA 16673	
215-545-1076	717-843-1897	814-312-1798	

TITLE	Detailed Road Alignment
DWG NO.	7-Motoring

Management Entity Breakdown for the 911 National Memorial Trail



September 11 National Memorial Trail Feasibility Study - Management Entities Matrix

Trail Alignments Summary

Campbell Thomas & Co - 1504 South Street - Philadelphia PA 19146-1636 - Tel:215-545-1076 - Fax 215-545-8397

Trail Alignment	Location Key for Management Entities Map	Trail Name(s)	MANAGEMENT ENTITY						NOTES
			Trail Status (Existing, Proposed)	Trail Management Entity in Place for Trail Segment (YES, NO)	Name of Management Entity(ies)	Contact Information for Existing Management Entity(ies)	Recommended Management Entity(ies) for this Segment	Contact Information for Recommended Management Entity(ies)	
911 Trail Alignment from East to West									
Entering Pennsylvania from New Jersey Highlands Trail									
Riegelsville, PA to Easton, PA	1	Delaware and Lehigh Canal Trail	Existing	Yes	The Delaware & Lehigh National Heritage Corridor (Multiple municipalities, Lehigh County, and DCNR	Scott Everett: D&L Stewardship & Trail Manager, scott@delawareandlehigh.org, (610) 923-3548, website: www.delawareandlehigh.org/index.php/trail/			
Easton, PA to Portland, PA	2	Forks Township Trail Network, Martins Creek Environmental Preserve Trails (Tekening Trail)	Proposed and Existing	Yes	Northampton County (Planning and Feasibility), Municipalities own and maintain trails: Easton, Forks Township, Lower Mount Bethel Township, Upper Mount Bethel Township	Bryan Cope: (Planning) Northampton County, Open Space Coordinator: (610) 559-3200 x 1 , bcope@northamptoncounty.org ; Rachel Sulzbach: Forks Township Recreation: (610) 252-0785 x 165, RSulzbach@forkstowship.org ; Lori Stauffer: Lower Mount Bethel Township: (610) 252-5074 lstauffer@lowermtbethel.org ; Judy Henckel: Upper Mount Bethel Township Supervisors: (570) 897-6127 x 104	Martins-Jacoby Watershed Association, Martins Creek Environmental Preserve	E-mail: PMcine4325@aol.com Website: www.mjwa.org WCLV Director: John Mautser jmauser@watershedcoalitionlv.org, Environmental Preserve: (800) 354-8383	Planning for trails is being done at the county level, but all ownership, maintenance, and management takes place at the municipal level according to Ryan Cope
Entering Pennsylvania from Liberty Water Gap Trail									
Columbia, NJ to Portland, PA Pedestrian Bridge	2 / 3		Existing	Yes	Delaware River Joint Toll Bridge Commission (Columbia-Portland)	Glenn Reibman: DRJTBC (was on RTC-WATE Steering Com.), Policy & Planning Director, E-mail: greibman@drjtbc.org, Phone: (610) 739-2448			Conditions: The bridge links to the Knowlton Trail reach of the Liberty Water Gap Trail in NJ. On the PA side the path from the bridge crosses an active rail spur and terminates at the shoulder of N. Delaware Dr. The Bridge is ADA accessible on both sides of the River. Significance: Historical - The bridge is at the location of the last of 18 covered bridges that once crossed the Delaware (plaque on site). The covered Bridge was destroyed by flood in August of 1955.
Portland, PA to Delaware Water Gap, PA	3	Portland to Delaware Water Gap-Multi-Use Trail (Proposed)	Proposed	Yes	Liberty-Water Gap Trail, PA Extension Committee	Cindy Fish: cyndi_lee@hotmail.com		Susan Cooper: Chair of DWG Openspace Committee- Showed interest in helping to promote the Bike Ride - (570) 269-9548 cooperalicSusan@gmail.com Judy Henckel: (Vice chairman) - Upper Mt. Bethel Township Supervisors 570-897-6127 x 104 - spoke for DWG study in 2012 Bryan Cope: Northampton County, Open Space Coordinator: (610) 559-3200 x 1 , bcope@northamptoncounty.org	Potential side path along N. Delaware Dr. road route. (Bike PA Route V exists along this segment)
Delaware Water Gap, PA to Wind Gap, PA	4		Envisioned	No	None-must be found		Monroe County / Cherry Valley NWR	Christine Dettore (Monroe County Open Space Coordinator) : 570-517-3100 - DWG study committee 2012 Fran Stephenson (Cherry Valley NWR): (fran_stephenson@fws.gov) Phone: (973) 702-7266	Potential side path along Cherry Valley Rd. route Significance: Delaware Water Gap, Cherry Valley National Wildlife Refuge. (Bike PA Route V exists along this segment)
Wind Gap, PA to Stockertown, PA	5	Plainfield Township Trail	Existing	Yes	Plainfield Township (Management / Ownership), Northampton County (Planning)	Michael Kresh: Recreation Board for Plainfield Township: (610) 759-6944 or Thomas Petrucci: Plainfield Township Manager (610) 759-6944 Bryan Cope: Northampton County: Open Space Coordinator: (610) 559-3200 x 1 , bcope@northamptoncounty.org			Link existing trails – Lehigh Lackawanna, Plainfield Township Trail, Stockertown Rail Trail, Palmer Bikeway, Forks Township Trail, Tatamy Trail
Stockertown, PA to Tatamy, PA	6	Stockertown Rail Trail	In Development / Existing	No	Northampton County (Planning)	Bryan Cope: Northampton County: Open Space Coordinator: (610) 559-3200 x 1 , bcope@northamptoncounty.org	Palmer Township / Stockertown Borough (Proposed Management), Northampton County (Planning)	Cynthia Carman: Planning Director for Palmer Township: (610) 253-7191 ccarman@palmertp.com. Stockertown Borough: (610) 759-8393	
Tatamy, PA to Palmer, PA	6	Tatamy Rail Trail	Existing	Yes	Tatamy Borough (Management/Ownership), Northampton County (Planning)	Anthony Jaskowicz: Recreation Board: Tatamy Borough: 610-252-7123 Bryan Cope: Northampton County: Open Space Coordinator: (610) 559-3200 x 1 , bcope@northamptoncounty.org			
Palmer, PA to Old Orchard (Easton), PA	7	Palmer Township Bike/Walking Path System : (Palmer Bikeway, Wilson Bike Path, Palmer-Bethlehem Township Bikeway)	Existing	Yes	Palmer Township (Primary Management / Ownership) Portions pass through Forks Township, Wilson Borough, and Bethlehem Township (Secondary Management / Ownership) , Northampton County (Planning)	Cynthia Carman: Planning Director for Palmer Township: 610-253-7191 ccarman@palmertp.com Bryan Cope: Northampton County: Open Space Coordinator: (610) 559-3200 x 1 , bcope@northamptoncounty.org			Link existing trails – Palmer Bikeway, Wilson Bike Path, Towpath Bike Trail, D&L Trail – Lehigh Canal South. Water Rt. along Lehigh River.
Old Orchard (Easton), PA to Jim Thorpe, PA	8	Delaware & Lehigh Trail	Existing with Gaps	Yes	The Delaware & Lehigh National Heritage Corridor (Multiple municipalities, Lehigh County, and DCNR	Scott Everett: D&L Stewardship & Trail Manager, scott@delawareandlehigh.org, (610) 923-3548		Bryan Cope: Northampton County Open Space Coordinator: (610) 559-3200 x 1 , bcope@northamptoncounty.org	Link existing trails –D&L Trail – Lehigh Canal South, D&L Trail, Ironton Rail Trail, D&L Trail, Lehigh Canal North. Water Rt. along Lehigh River. Gaps exist between Allentown, PA and Northampton, PA as well as Weissport, PA and Jim Thorpe, PA
Jim Thorpe, PA to Summit Hill, PA	9	Switchback Trail	Existing	Yes	Switchback Gravity Railroad Foundation	SGRF Office Phone: 570-325-8255, Dale Freudenberger at 610-377-4063, dale@delawareandlehigh.org Joe DiBello: 215-597-1581, Joe_DiBello@nps.gov, John Drury: 570-325-4436, jdrury@pdt.net	Carbon County	Dave Bodnar: Planning Director: davidbodnar@carboncounty.net ; (570) 325-3670	Small Gap in Jim Thorpe at Lehigh Gorge between Switchback Trail and D&L Trail. Links exist between Switchback Trail and numerous hiking trails between Jim Thorpe and Summit Hill- Summit Hill Single Track, Cabin Ridge, Bob's Option, Pisgah Plane, etc.
Summit Hill, PA to Tamaqua, PA	10	Tamaqua to Summit Hill Trail (Panther Valley Trail)	Envisioned	No	None-must be found		Carbon County, Tamaqua Township	Dave Bodnar: Planning Director: davidbodnar@carboncounty.net ; (570) 325-3671	
Tamaqua, PA to Middleport, PA	11	Schuylkill Valley Heritage Trail	Existing	Yes	Eastern Schuylkill Recreation Commission	Eastern Schuylkill Recreation Commission (570) 668-2919		Susan A. Smith: Schuylkill County Planning Director, Phone: 570 628-1038 ssmith@co.schuylkill.pa.us	
Middleport, PA to Pottsville, PA	12	Pottsville to Middleport - John Bartram Section	Proposed	No	None-must be found		Schuylkill County / Schuylkill river Greenway Association	Susan A. Smith: Schuylkill County Planning Director, Phone: 570 628-1038 ssmith@co.schuylkill.pa.us Bob Folwell: Schuylkill River National Heritage Area, Trails Project Manager, rfolwell@schuylkillriver.org, (848) 945-0200	Trail proposed in 2006 Open Space and Greenway Plan for Schuylkill Township. Possible Extension of Bartram Trail
Pottsville, PA to Port Clinton, PA	13	Schuylkill River Trail- John Bartram Trail Section	Existing with Gaps	Yes	Schuylkill County (owner), Schuylkill River Greenway Association (lease / maintenance / development / bridge ownership) , Schuylkill County Conservation District (coordination)	Bob Folwell: Schuylkill River National Heritage Area, Trails Project Manager, rfolwell@schuylkillriver.org, (848) 945-0200 ; Bob Evanchalk: (Schuylkill County Conservation District			

EAST SECTION

	Location Key for Management Entities Map	Trail Name(s)	MANAGEMENT ENTITY						NOTES	
			Trail Status (Existing, Proposed)	Trail Management Entity in Place for Trail Segment (YES, NO)	Name of Management Entity(ies)	Contact Information for Existing Management Entity(ies)	Recommended Management Entity(ies) for this Segment	Contact Information for Recommended Management Entity(ies)		
		911 Trail Alignment from East to West								
EAST SECTION	Port Clinton, PA to Hamburg, PA / Kernsville Dam Wildlife Area	14	Schuylkill River Trail- John Bartram Trail Section	Existing	Yes	Schuylkill River Greenway Association (Owns/Controls Kernsville Dam and Trail from Port Clinton to Kernsville Dam) , PA DEP (Owns Kernsville De-Silting Basin) , Blue Mountain Wildlife (Manages Kernsville Dam Wildlife Area)	Bob Folwell: Schuylkill River National Heritage Area, Trails Project Manager, rfolwell@schuylkillriver.org, (848) 945-0200 ; Greg Adams: Blue Mountain Wildlife at info@bluemountainwildlife.com.			
	Hamburg, PA /Kernsville Dam Wildlife Area to Berne, PA	15	Schuylkill River Trail- John Bartram Trail Section	Proposed and Existing	Yes	Tilden Township (Owner of small piece of Bartram Trail from Industrial Highway and SRGA's River Bridge in Hamburg)	Cheryl Haus: Township Manager of Tilden Township: email: chaus@tildentownship.com phone: (610-562-7410) Bob Folwell: Schuylkill River National Heritage Area, Trails Project Manager, rfolwell@schuylkillriver.org, (848) 945-0200			
	Berne, PA to Leesport, PA	16	Schuylkill River Trail	Proposed	No		Bob Folwell: Schuylkill River National Heritage Area, Trails Project Manager, rfolwell@schuylkillriver.org, (848) 945-0200	Management entities not yet identified	Brendan Lederer, Berks County Trail Manager at blederer@countyofberks.com , Centre Township: (610) 926-8833	The County of Berks Supports the trail activity, but cannot commit to management of these sections at the present time.
	Leesport, PA to Reading, PA	17	Schuylkill River Trail	Proposed	Yes	Bern Township (management and Development)	Bob Folwell: Schuylkill River National Heritage Area, Trails Project Manager, rfolwell@schuylkillriver.org, (848) 945-0200 ; Brian Potts: Manager of Bern Township (bpotts@berntownship.org)			
	Pottsville, PA to Reading, PA	13 - 17	Schuylkill River Trail -John Bartram Trail Section	Existing with Gaps	Yes	Schuylkill River Heritage Area	Bob Folwell: Schuylkill River National Heritage Area, Trails Project Manager, rfolwell@schuylkillriver.org, (848) 945-0200			Link existing trails – Schuylkill River Trail, John Bartram Trail, Union Canal Trail, Schuylkill River Trail. Water Rt. along Schuylkill River
	Reading, PA to Blue Marsh Lake	18	Union Canal Trail	Existing	Yes	Berks County Parks and Recreation	Berks County, Department of Parks and Recreation, owner of the Berks Union Canal Trail piece. Contact is Brendan Lederer, Trail Manager at blederer@countyofberks.com, or Chris Stress, Director at cstress@countyofberks.com.			422 Corridor, linking Union Canal Trail, Blue Marsh Lake Trail, and Water Rt. Along Union Canal
	Blue Marsh Lake to Bernville, PA	19	Blue Marsh Lake Trail	Existing	Yes	Army Corps of Engineers	Army Corps of Engineers: (610) 376-6337, kathleen.j.grim@usace.army.mil; nathan.l.frelwald@usace.army.mil			422 Corridor, linking Union Canal Trail, Blue Marsh Lake Trail, and Water Rt. Along Union Canal
	Bernville, Pa to Lebanon, PA	20	Union Canal Trail/Tulpehocken Greenway	Envisioned	No		Kathleen Daubert - Lebanon County Historical Society- Friends of Union Tunnel Park	Management entities not yet identified	Brendan Lederer, Trail Manager at blederer@countyofberks.com, or Chris Stress, Director at cstress@countyofberks.com. Lebanon County Rails to Trails: John Wengert (717) 273-2658 jbweng@comcast.net	422 Corridor, linking Union Canal Trail, Blue Marsh Lake Trail, and Tulpehocken Water Trail. Along Union Canal. The County of Berks Supports the trail activity, but cannot commit to management of these sections at the present time. The Berks County 2007 Greenway, Park and Recreation Plan envisions the "Tulpehocken Water Trail" from Bernville to Womelsdorf, but a trail corridor along this segment should also be pursued from Bernville to Lebanon.
	Lebanon, PA to Bellaire, PA	21	Lebanon Valley Rail Trail	Existing	Yes	Lebanon Valley Rails-to-Trail's, Lebanon County	John Wengert: Lebanon Valley Rails to Trails (717) 273-2658 bweng@comcast.net			Link existing trails - Lebanon Valley Rail Trail, Conewego Recreation Trail
	Bellaire, PA to Aberdeen, PA	22	Conewego Recreation Trail	Existing	Yes	Lancaster County Parks and Recreation	Paul Weiss: Lancaster County Parks and Recreation Administrator: Phone: (717) 299-8215, E-mail: weissp@co.lancaster.pa.us			Link existing trails - Lebanon Valley Rail Trail, Conewego Recreation Trail
	Aberdeen, Pa to Falmouth, PA	22		Envisioned	No	None-must be found		Lancaster County Parks and Recreation	Paul Weiss: Lancaster County Parks and Recreation Administrator: Phone: (717) 299-8215, E-mail: weissp@co.lancaster.pa.us	Lebanon Valley Rail Trail Extension could connect to Falmouth, PA. The trail has been investigated, but there is private owner push back.
	Falmouth, PA to Columbia, PA	22	Northwest Lancaster County River Trail	Existing with Gaps	Yes	Joint effort by: Susquehanna Gateway Heritage Area, Lancaster County Parks and Rec, Lancaster County Conservation, Lancaster County Solid Waste Management Authority, Lancaster County Planning Commission, Conoy Township, East Donegal Township, Marietta Borough, West Hempfield Township, Columbia Borough, DCNR	Mike Domin: Principal Planner at Lancaster County Planning Commission. (717) 299-8333 ; domin@co.lancaster.pa.us Columbia Borough: (717) 684-2467 Conoy Township: (717) 367-4927 East Donegal Township: (717) 426-4143 Marietta Borough: (717) 426-4143 Lancaster County Dept. of Parks and Rec: (717) 299-8215 Jonathan L. Pinkerton: Vice President Susquehanna Gateway Heritage Area (717) 252-0229 ext. 2 jpinkerton@susquehannaheritage.org , Paul Weiss: Lancaster County Parks and Recreation Administrator			The five municipalities and Lancaster County Parks and Recreation own and operate the trail within their jurisdiction.
	Columbia, PA to Wrightsville, PA Bridge Veterans Memorial Bridge	22 - 23	Pedestrian Walkway on Bridge	Existing	Yes	PennDOT, Columbia Borough	Columbia Borough: (717) 684-2467			
CENTRAL SECTION	Wrightsville, PA to York, PA	23	York Heritage Trail	Existing and Envisioned	Yes	York County Rail Trail Authority	Gwen Loose: (717) 428-0999 , gloose@yorkcountyrailtrails.org			Gap between Wrightsville and York Heritage Trail. Bike PA Route S can be utilized to link to York Heritage Trail.
	York, PA to Hanover, PA	23	Hanover Trolley Trail	Proposed and Existing	Yes	York County Rail Trail Authority	Gwen Loose: (717) 428-0999 , gloose@yorkcountyrailtrails.org			Hanover Trolley Trail is 25% complete from Hanover to York.
	Hanover, PA to Gettysburg, PA Caledonia State Park	24	Gettysburg to Hanover Trail (Grand History Loop)	Proposed	Yes	Healthy Adams Bicycle/Pedestrian Inc. (HABPI),	Adams: Dennis Hickethier (717) 337-2932 or Tom Jolin (717) 642-8053.			Proposed Grand History Loop Trail connecting Hanover to Gettysburg, Linking to Hanover Trolley Trail.
	Gettysburg, PA to Caledonia State Park	24		Envisioned	No	None	None	Healthy Adams Bicycle/Pedestrian Inc. (HABPI),	Adams: Dennis Hickethier (717) 337-2932 or Tom Jolin (717) 642-8053.	Lincoln Highway Corridor - Bike PA Route S. Connecting to the Appalachian Trail and the proposed Conococheague Trail.
	Caledonia State Park to Chambersburg, PA (Link Hwy.SR 30 Corridor)	25	Conococheague Trail , Chambersburg Rail Trail	Proposed and Existing	Yes	Chambersburg Borough	Phil Wolgemuth: Assistant to the Borough Manager, Borough of Chambersburg Phone: (717) 261-3232 pwolgemuth@chambersburgpa.gov	Greene Township	Todd E. Burns, Chairman Green Township BOS Phone: 717-263-9160, tburns@greentwp.us	Lincoln Highway Corridor - Bike PA Route S. Existing Trails - Chambersburg Rail Trail, Appalachian Trail.
	Chambersburg, PA to Shippensburg, PA (Route 11 Corridor)	26		Proposed	Yes	Chambersburg Borough	Phil Wolgemuth: Assistant to the Borough Manager, Borough of Chambersburg Phone: (717) 261-3232 pwolgemuth@chambersburgpa.gov	Franklin County	Phil Tarquino - Director: 717-261-3855	Route 11 Corridor ; Existing Trails - Chambersburg Rail Trail
	Shippensburg, PA to Carlisle, PA	27	Cumberland Valley Rail Trail	Existing and Proposed	Yes	Cumberland Valley Rail Trail Council, Cumberland County	CVRTC: (717) 860-0444, info@cvrtc.org Stephanie Williams : Greenway & Openspace Coordinator - Cumberland County Planning, (717) 240-5383, sjwilliams@ccpa.net			CVRT Corridor, Existing Trails - Cumberland Valley Rail Trail is existing from Shippensburg to Newville, and is planned to extend to Carlisle. The "Goodyear Road" footpath currently extends the corridor between Newville and Carlisle. Linking Trails: Letort Spring Run Nature Trail in Carlisle.

	Location Key for Management Entities Map	Trail Name(s)	MANAGEMENT ENTITY						NOTES		
			Trail Status (Existing, Proposed)	Trail Management Entity in Place for Trail Segment (YES, NO)	Name of Management Entity(ies)	Contact Information for Existing Management Entity(ies)	Recommended Management Entity(ies) for this Segment	Contact Information for Recommended Management Entity(ies)			
CENTRAL SECTION	911 Trail Alignment from East to West										
	Carlisle, PA to Wormleysburg, PA (Route 11 Corridor)	28		Envisioned	Yes	Cumberland County	Stephanie Williams : Greenway & Openspace Coordinator - Cumberland County Planning, (717) 240-5383, sjwilliams@ccpa.net	Appalachian Trail Conservancy	Jonathan Peterson: Environmental Planner: 717-258-5771 jpeterson@appalachiantrail.org	Route 11 Corridor, (Bike PA Route J2 exists along a portion of this segment)	
	Wormleysburg, PA to Harrisburg, PA (Harvey Taylor Memorial Bridge)	28 - 29	Harvey Taylor Memorial Bridge	Existing	Yes	PennDOT				Pedestrian Sidewalks were incorporated in 2004. Multi-use trail improvements are proposed for the Capital Area Transit Bridge as noted in the HATS Cross-River Connections Study.	
	Harrisburg, PA (Capital Area) to Fort Hunter, PA	29	Capital Area Greenbelt	Existing (being extended)	Yes	Capital Area Greenbelt Association	(717) 921-GREEN (921-4733), caga@caga.org	Capital Area Greenbelt Association	Carl Dickson: Dauphin County Parks and Rec Director 717-921-4733, cdickson@dauphinc.org	Linking to Proposed Main Line Canal Greenway. The Capital Area Greenbelt is currently being extended north to Fort Hunter Park using TAP funds.	
	Harrisburg, PA to Johnstown, PA (Connecting Harrisburg, Duncannon, Lewistown, McVeytown, Mount Union, Huntingdon, Water Street, Williamsburg, Hollidaysburg, Cresson, Summerhill, and Johnstown)	30 - 37	Main Line Canal Greenway (Pittsburgh to Harrisburg)	Proposed with some Existing	Yes	Main Line Canal Greenway, Allegheny Ridge Corporation, Trans Allegheny Trails	Jane Sheffield - Allegheny Ridge Corporation, work: (814) 940-1922 mobile: (814) 932-7754, jsheffield@alleghenyridge.org			Route 22 Corridor, Capital Area Greenbelt (Existing - in Harrisburg, Penn Central RR Trail (Planned- McVeytown to Mount Union), Lower Trail (Existing- Franklin Branch of the Juniata River from Water Street to between Williamsburg and Hollidaysburg), Allegheny Portage RR (Existing - West of Hollidaysburg), Staple Bend Tunnel Trail (Existing- Connects Path of the Flood Trail East of Johnstown) Path of The Flood (Existing - East of Johnstown)	
	Harrisburg, PA (Capital Area) to Duncannon, PA	30	Main Line Canal Greenway	Envisioned		Main Line Canal Greenway, Allegheny Ridge Corporation, Trans Allegheny Trails	Jane Sheffield - Allegheny Ridge Corporation, work: (814) 940-1922 mobile: (814) 932-7754, jsheffield@alleghenyridge.org Jay Schreiman: PA DCNR - Recreation and Parks Advisor: jschreibma@pa.gov, (717) 772-4362	Capital Area Greenbelt Association	Carl Dickson: Dauphin County Parks and Rec Director 717-921-4733, cdickson@dauphinc.org	Conservation efforts underway by Dauphin County Parks and Recreation	
Duncannon, PA to Lewistown, PA	31	Main Line Canal Greenway	Envisioned		Main Line Canal Greenway, Allegheny Ridge Corporation, Trans Allegheny Trails	Jane Sheffield - Allegheny Ridge Corporation, work: (814) 940-1922 mobile: (814) 932-7754, jsheffield@alleghenyridge.org					
WEST SECTION	Lewistown, PA to Alfata, PA through Huntingdon, PA	32	Main Line Canal Greenway - In pursuit of Feasibility Study for Huntingdon and Mifflin Counties	Envisioned	No			Central PA Trails/ Huntingdon County	Mark Palusi, Director, Central PA Trails	Feasibility Study in pursuit through Mifflin and Huntingdon Counties 2015 DCNR C2P2 Funding Application.	
	Alfata, PA to Canoe Creek State Park	33	Lower Trail	Existing	Yes	Rails to Trails of Central PA	Karl King, RTCPA (814) 832-2400			Funding secured to construct box culvert under Route 22 to connect to Canoe Creek State Park.	
	Lower Trail at Canoe Creek S.P. to Hollidaysburg, PA	34	Main Line Canal Greenway (Proposed Alignment Pending)	Envisioned	No			Rails to Trails of Central PA/ Blair County Recreation Authority	Karl King, RTCPA, (814) 832-2400	Main Line Canal Greenway (Pending Alignment proposed to DeGol Corporation)	
	Hollidaysburg, PA to Duncansville, PA	35	Main Line Canal Greenway (Feasibility Studies completed and underway)	Envisioned	No			Rails to Trails of Central PA/ Blair County Recreation Authority	Karl King, RTCPA, (814) 832-2400	Main Line Canal Greenway (Feasibility Studies completed and underway)	
	Old US 220, Duncansville, PA to Skew Arch Bridge at Allegheny Portage Railroad	36	Six to Ten Trail	Existing	Yes	Trans Allegheny Trails and National Park Service	(814) 940-1421, info@transalleghenytrails.com				
	Allegheny Portage Railroad	36	Main Line Canal Greenway (NPS site at Historic Inclined Plane) Allegheny Portage Railroad	Existing	Yes	National Park Service and Allegheny Portage Railroad					National Park Service Sites: Incline Plane and Lemon House
	Cresson, PA through Lilly to Portage, PA(Allegheny Portage Railroad)	37	Mainline Canal Greenway	Envisioned	No	TBD		TBD (Possibly Conemaugh Valley Cons./ CCCRA)	Jane Sheffield - Allegheny Ridge Corporation, jsheffield@alleghenyridge.org		Feasibility Study Recommended - Bridge and Highway Right-of-Way Challenges to overcome in planning and design.
	Portage, PA to Ehrenfield, PA	37	Main Line Canal Greenway	Envisioned	No	TBD		TBD (Possibly Conemaugh Valley Cons./ CCCRA)	Jane Sheffield - Allegheny Ridge Corporation, jsheffield@alleghenyridge.org		Feasibility Study Recommended - Bridge and Highway Right-of-Way Challenges to overcome in planning and design.
	Ehrenfield, PA to East Conemaugh through Mineral Point	38	Path of the Flood Trail	Existing	Yes	Cambria County Conservation and Recreation Authority (CCCRA)	Delores Columbus, CCCRA (814) 472-2110				
	Johnstown, PA (Gap along Conemaugh River)	39	TBD- Gap between Path of Flood Trail and Jim Mayer Riverwalk	Envisioned	No	TBD		TBD (Possibly Conemaugh Valley Cons./ CCCRA to Path of Flood Trail)			Feasibility Study Recommended - Bridge and Highway Right-of-Way Challenges to overcome in planning and design.
	Johnstown, PA (Jim Mayer Riverwalk Trail)	39	Jim Mayer Riverwalk Trail	Existing	Yes	Trans Allegheny Trails and Conemaugh Valley Conservancy	(814) 940-1421, info@transalleghenytrails.com				Route 403 Corridor. Trails - Jim Mayer Rivers walk Trail along Stoney Creek River from Michigan Ave. in Ferndale to Central Ave. - just across river from Greater Johnstown High School.
	Johnstown, PA to Flight 93 Nat. Mem. (Lincoln Hwy. SR 30)	40	TBD - In Pursuit of Feasibility Study	(Currently Exploring on-road route options)	No	TBD		TBD (Possibly NPS and/or Somerset County to Windber, then CCCRA to Path of Flood Trail)	Brad Clemenson- Senior Project Manager, bclemenson@peca.org, (814) 659-3465		Trails - Off Road/ On Road Route in planning (Significant topographic and road crossing aspects under consideration)
	Flight 93 Nat. Mem. (Lincoln Hwy. SR 30) to Berlin, PA	41	TBD	Proposed	Yes	Somerset County	Brett Hollern: (814) 445-1572, brettehollern@gmail.com				Trails - Current On Road Route in planning to be open 9/11 2016.
	Berlin, PA to Garrett, PA	41	TBD - Possibly 'B&O Rail Trail'	Proposed	Yes	Somerset County	Brett Hollern: (814) 445-1572, brettehollern@gmail.com				Lincoln Highway Corridor - Bike PA Route S Trails - B&O Rail r/w to become Rail with Trail from Garrett to Berlin, Connecting to Great Allegheny Passage