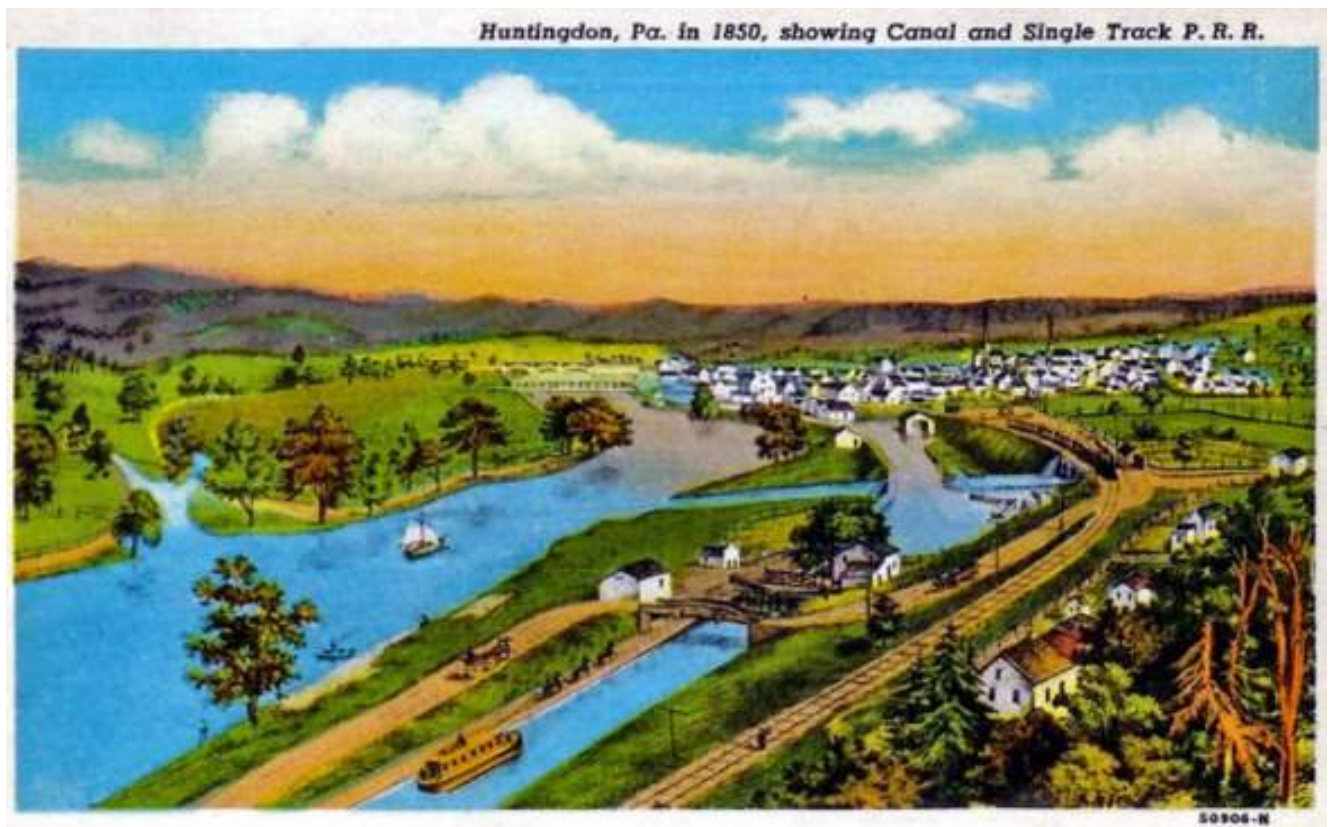


APPENDICES FOR A FEASIBILITY STUDY FOR THE MAIN LINE CANAL GREENWAY TRAIL

(A SEGMENT OF THE SEPTEMBER 11TH NATIONAL MEMORIAL TRAIL)
HUNTINGDON AND MIFFLIN COUNTIES, PA

Prepared for:

Allegheny Ridge Corporation
Allegheny Heritage Discovery Center
1421-1427 12th Avenue
PO Box 348, Altoona PA 16603



Prepared by:

Campbell Thomas & Co.
1504 South Street
Philadelphia, PA 19146
215-545-1076

In association with:

Laird LA, PLLC
821 Dick Schoolhouse Rd...
Roaring Spring, PA 16673
814-614-4707



Campbell Thomas & Co.
1504 South St., Philadelphia, PA 19146 • 215-545-1076
Architecture • Preservation • Community & Transportation Planning



January 2019

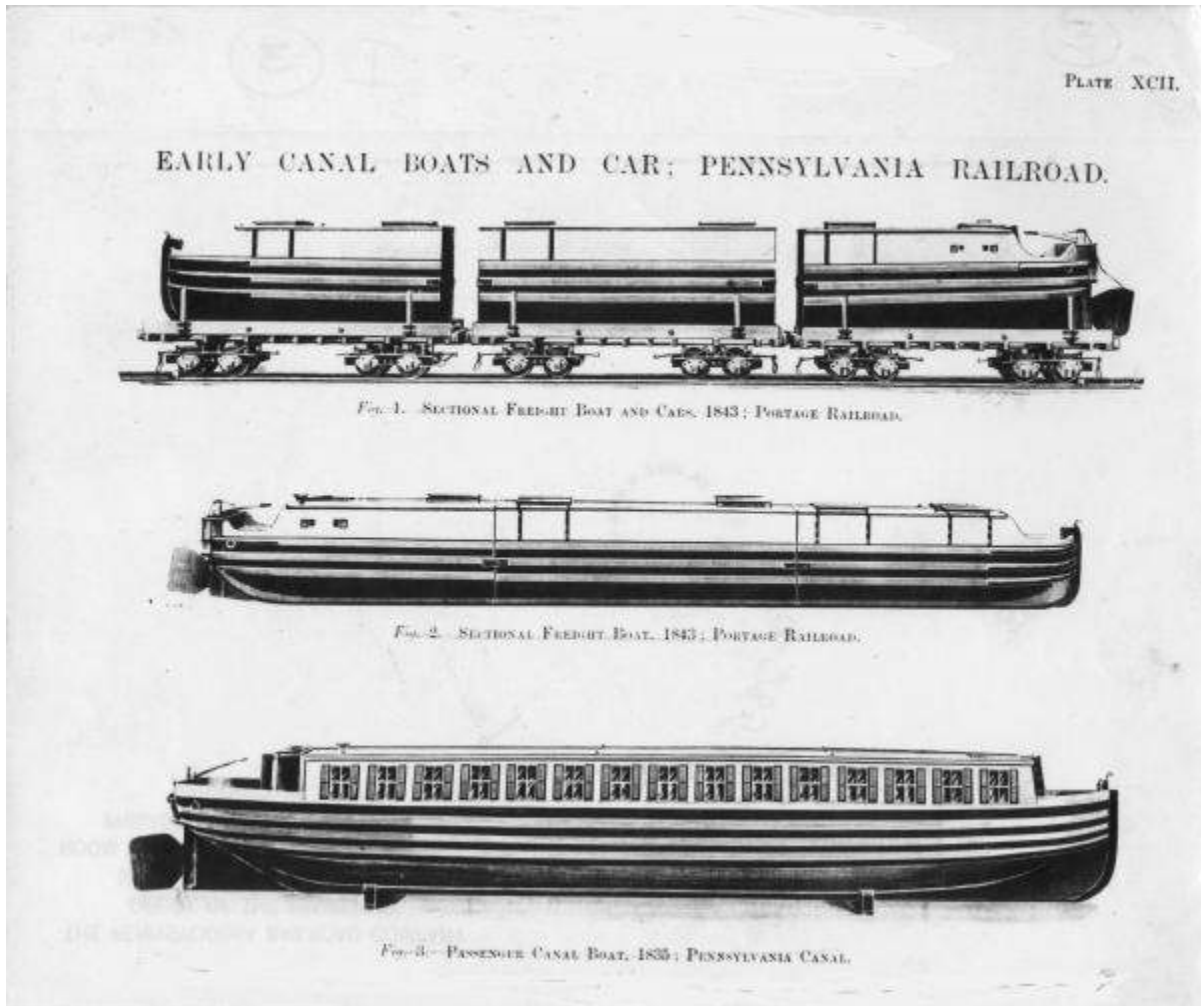
V. Appendices

A.	Background Research & Analysis.....	80
i.	Main Line Canal Greenway Map.....	81
ii.	911-Trail Maps	82
iii.	Pennsylvania Main Line Canal – Juniata Division Maps	84
iv.	Analysis Overview Maps.....	86
v.	Juniata River Trail Study Conceptual Trail Map – 2015	104
B.	Mapping.....	105
i.	GIS Base Mapping – 1A-1G	106
ii.	Alternate Study Corridors Sketch Map	114
iii.	Recommended Interim and Ultimate Alignment Mapping – 2A-2G.....	115
iv.	Property Ownership Mapping – 3A-3G	123
v.	Property Ownership Reference Spreadsheet	130
vi.	Overall Detailed Segment Maps – 4A-4G	134
vii.	Mifflin County (Segment 18-39 Detail Maps)	141
viii.	Phasing Maps – 4.1-4.6	164
ix.	Detailed Mapping Alternatives Considered in Study	170
C.	Opinion of Probable Cost.....	185
i.	Opinion of Probable Cost by Phase.....	186
ii.	Huntingdon County – Detailed Opinion of Probable Cost	187
iii.	Mifflin County – Detailed Opinion of Probable Cost.....	188
D.	Acquisition Techniques.....	189
i.	Acquisition Techniques Spreadsheet	190
E.	Maintenance & Management.....	191
i.	Management / Operation / and Maintenance Alternatives	192
ii.	Trail Management Examples Spreadsheet	193
F.	Project Funding.....	194
i.	Potential Funding Sources Available.....	195
G.	Public Outreach.....	201
i.	Interview Spreadsheet.....	202
ii.	Steering Committee Meeting Minutes.....	208
iii.	Stakeholder Workshop Minutes and Survey Responses	231
iv.	Public Meeting Minutes	268
v.	PennDOT Meeting Minutes & Materials	283
vi.	Planning Commission Meeting Minutes.....	290

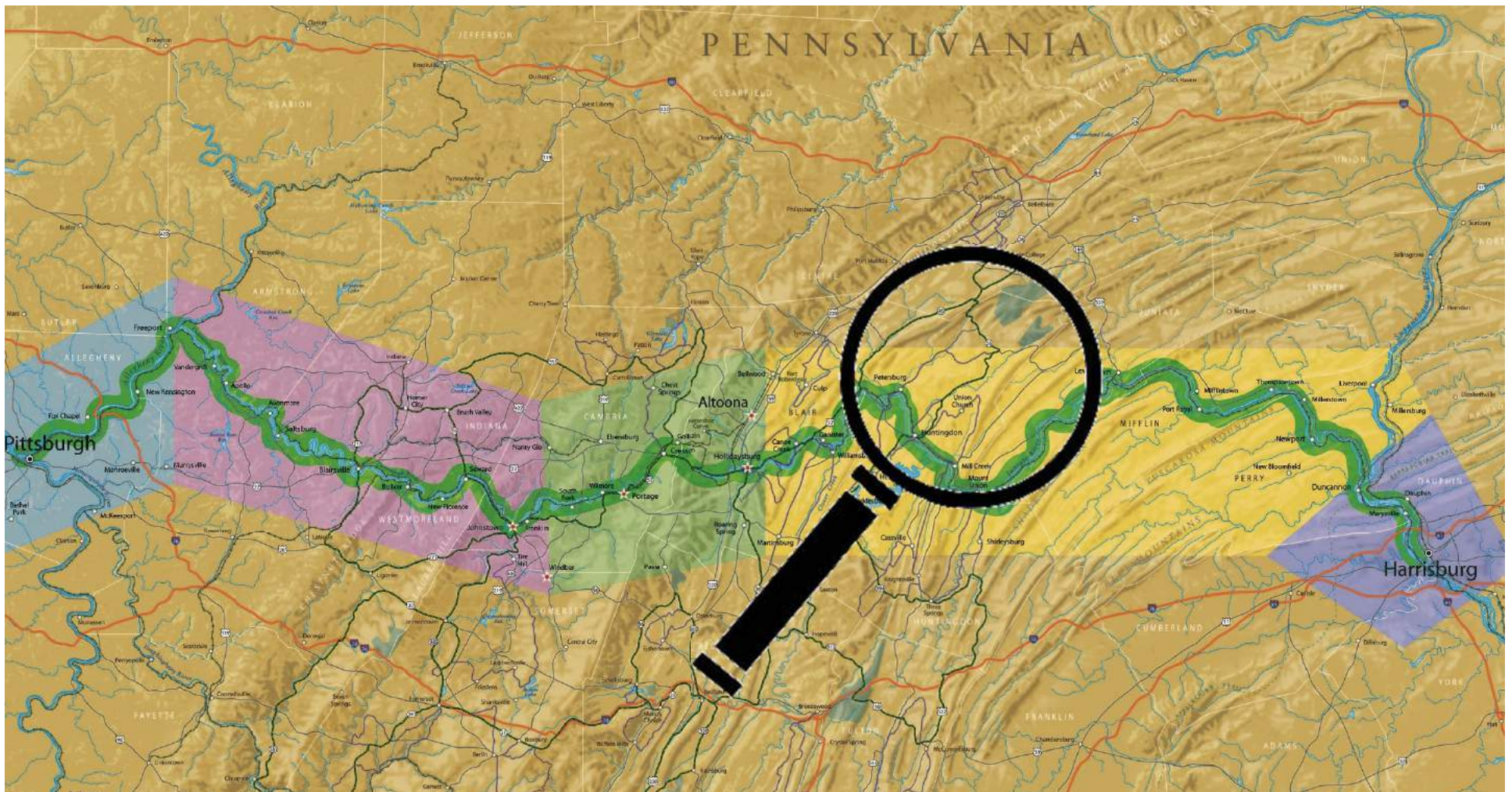
V. Appendices

A. Background Research & Analysis

- i. Main Line Canal Greenway Map..... 81
- ii. 911-Trail Maps 82
- iii. Pennsylvania Main Line Canal – Juniata Division Maps 84
- iv. Analysis Overview Maps 86
- v. Juniata River Trail Study Conceptual Trail Map – 2015..... 104



Pittsburgh to Harrisburg - Main Line Canal Greenway





September 11th National Memorial Trail

A National Trail Connecting the World Trade Center, Flight 93 and Pentagon Memorials
Map Updated May 2016



National September 11 Memorial

Flight 93 National Memorial

Pentagon Memorial

Legend

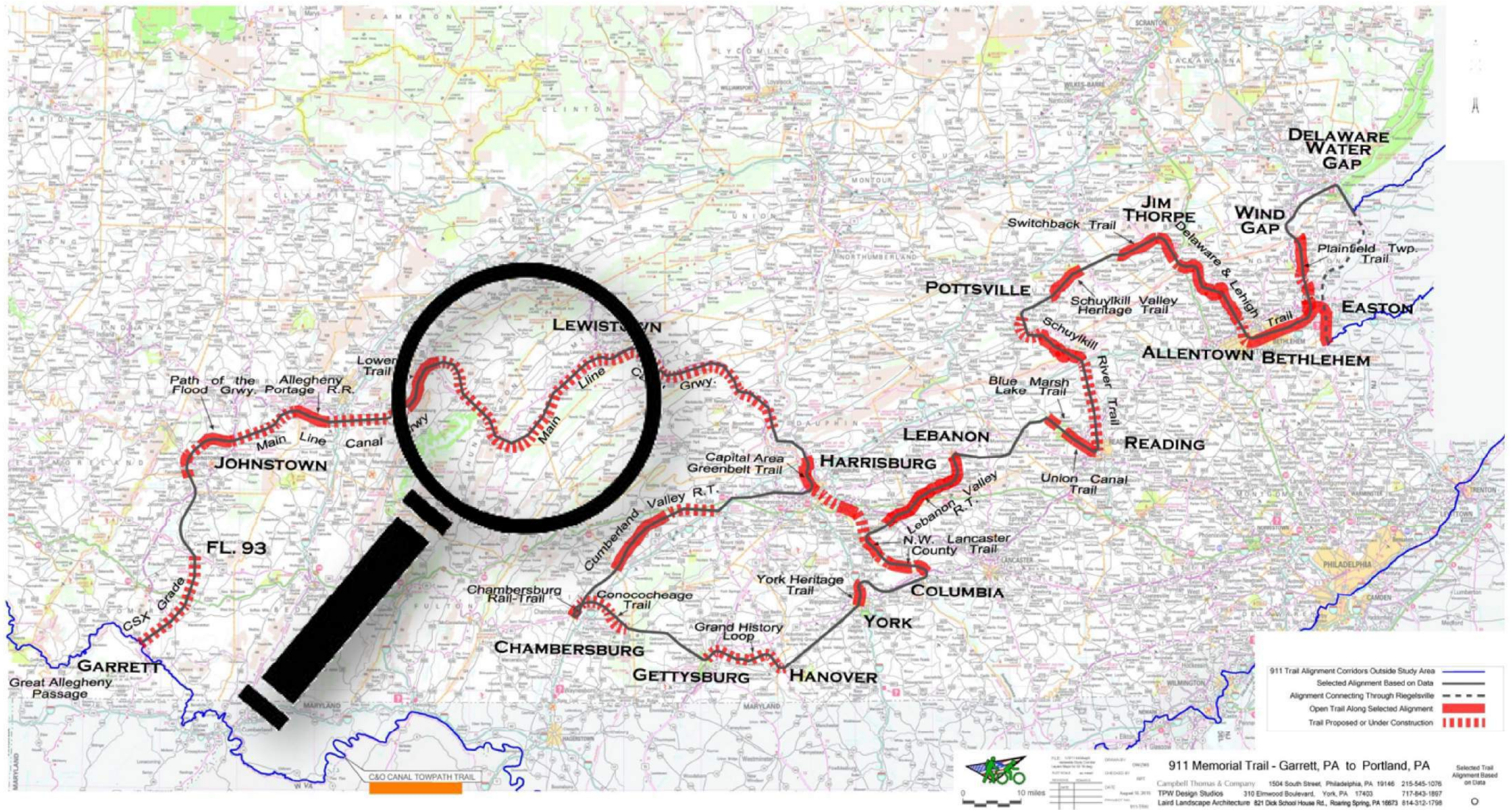
- Multi-use Trail
- On-Road
- Parks and Forests

Sources:
September 11th National Trail Alliance
Pennsylvania Department of Conservation and Natural Resources
National Park Service
Rails-to-Trails Conservancy
East Coast Greenway Alliance
ESRI

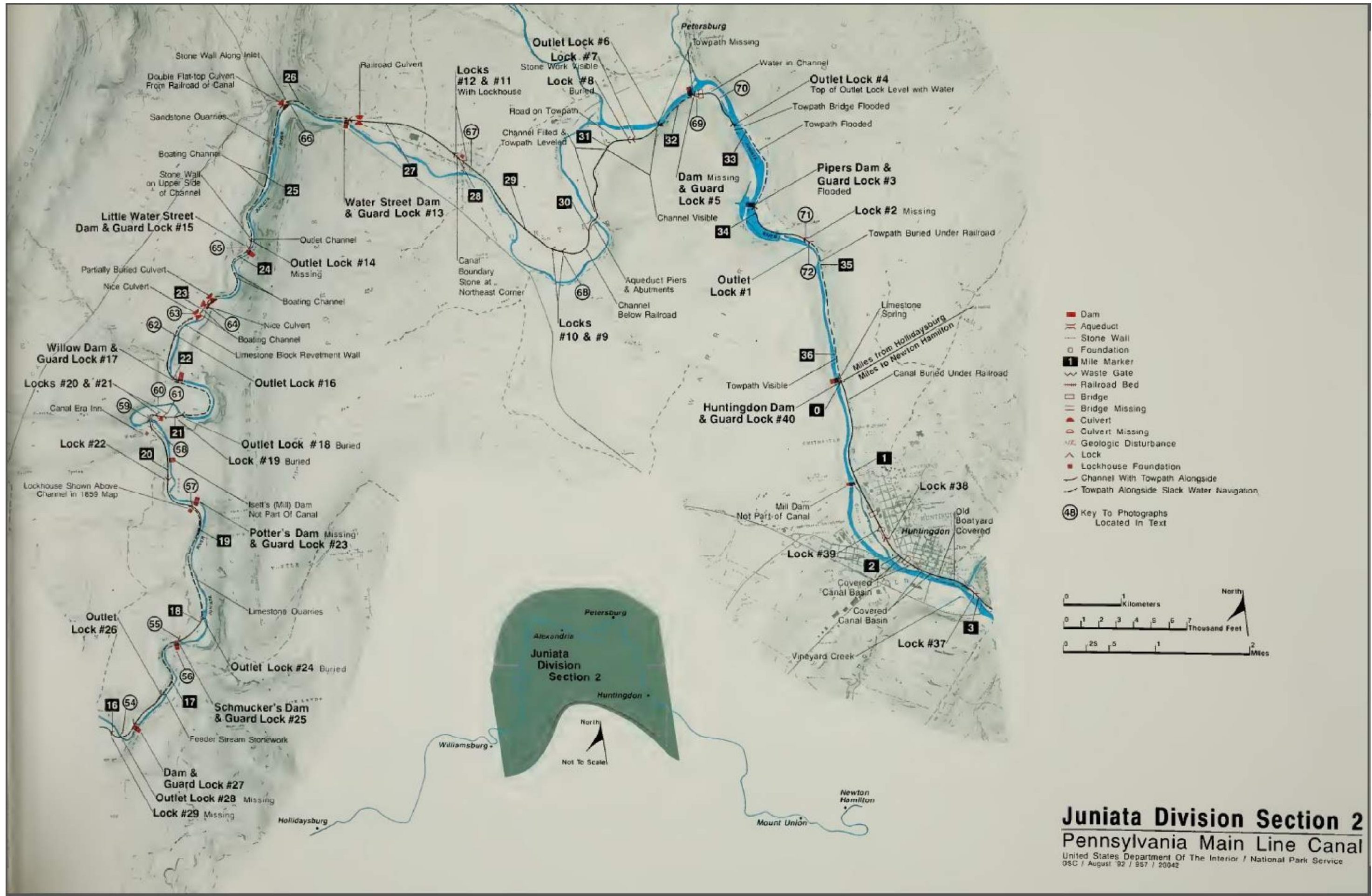
May, 2016



911 Steering Committee Selected Alignment Based on Data

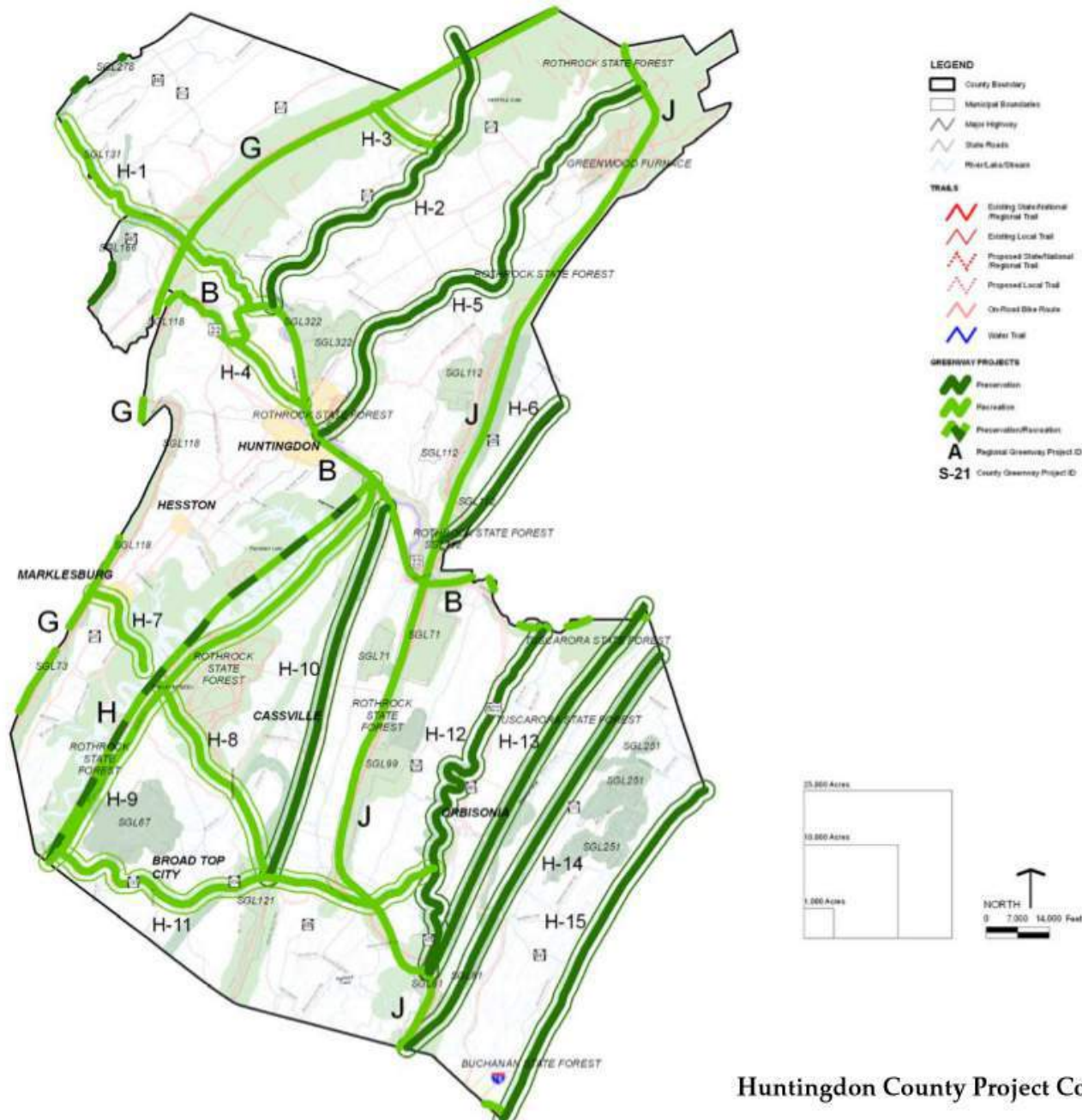


911 Memorial Trail - Garrett, PA to Portland, PA
 Campbell Thomas & Company 1504 South Street, Philadelphia, PA 19146 215-545-1076
 TPW Design Studios 310 Elmwood Boulevard, York, PA 17403 717-843-1897
 Laird Landscape Architecture 821 Dick School House Rd., Roaring Spring, PA 16673 814-312-1798



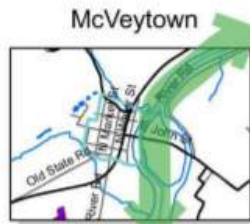
Juniata Division Section 2
Pennsylvania Main Line Canal
 United States Department Of The Interior / National Park Service
 OSC / August '92 / 957 / 20942

Part Four – Greenways and Open Space Vision



Huntingdon County Project Corridors

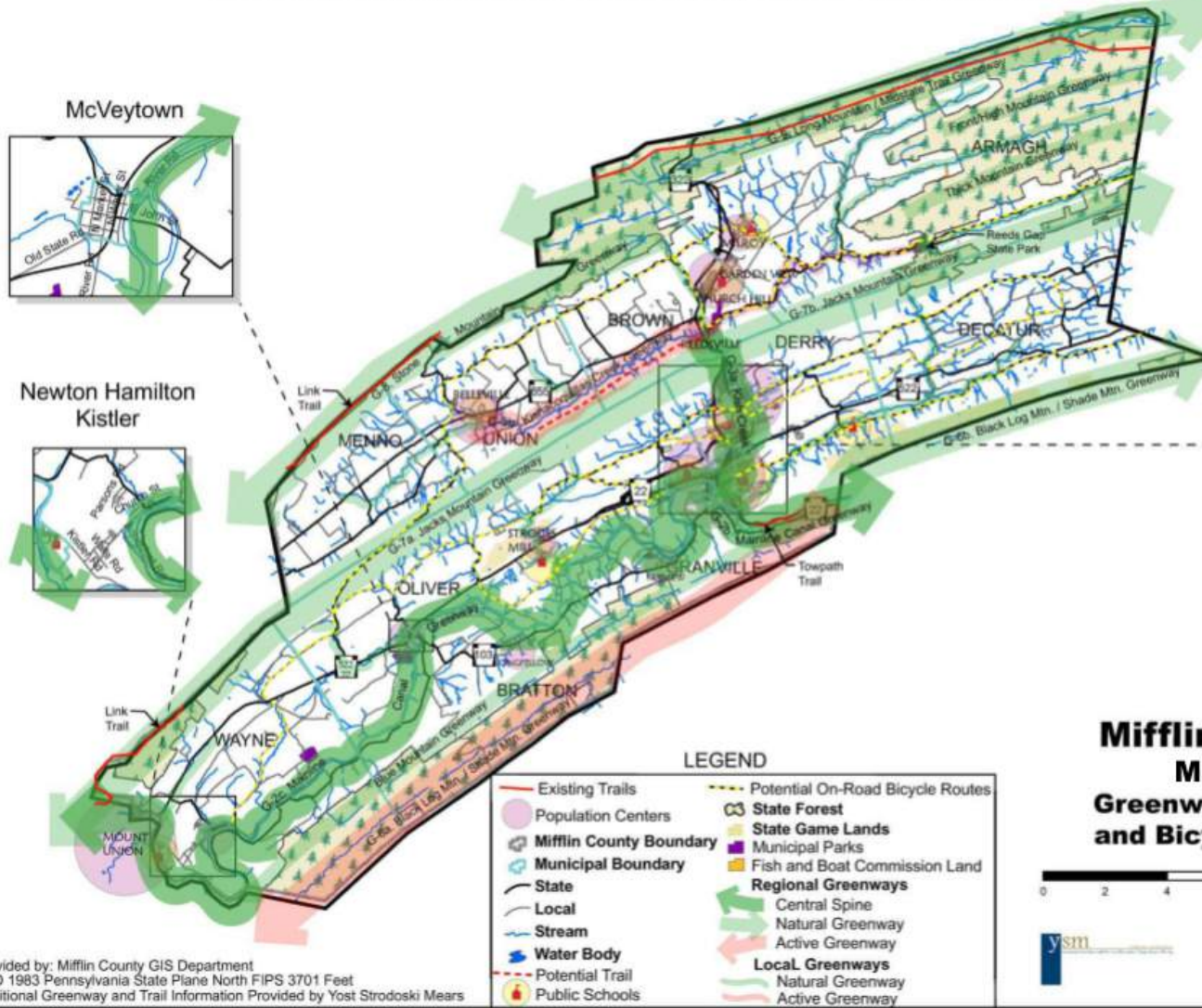
Juniata/Mifflin County Greenway, Open Space and Rural Recreation Plan



Newton Hamilton
Kistler



Burnham
Lewistown
Juniata Terrace



LEGEND

- Existing Trails
- Population Centers
- Mifflin County Boundary
- Municipal Boundary
- State
- Local
- Stream
- Water Body
- Potential Trail
- Public Schools
- Potential On-Road Bicycle Routes
- State Forest
- State Game Lands
- Municipal Parks
- Fish and Boat Commission Land
- Regional Greenways**
- Central Spine
- Natural Greenway
- Active Greenway
- Local Greenways**
- Natural Greenway
- Active Greenway

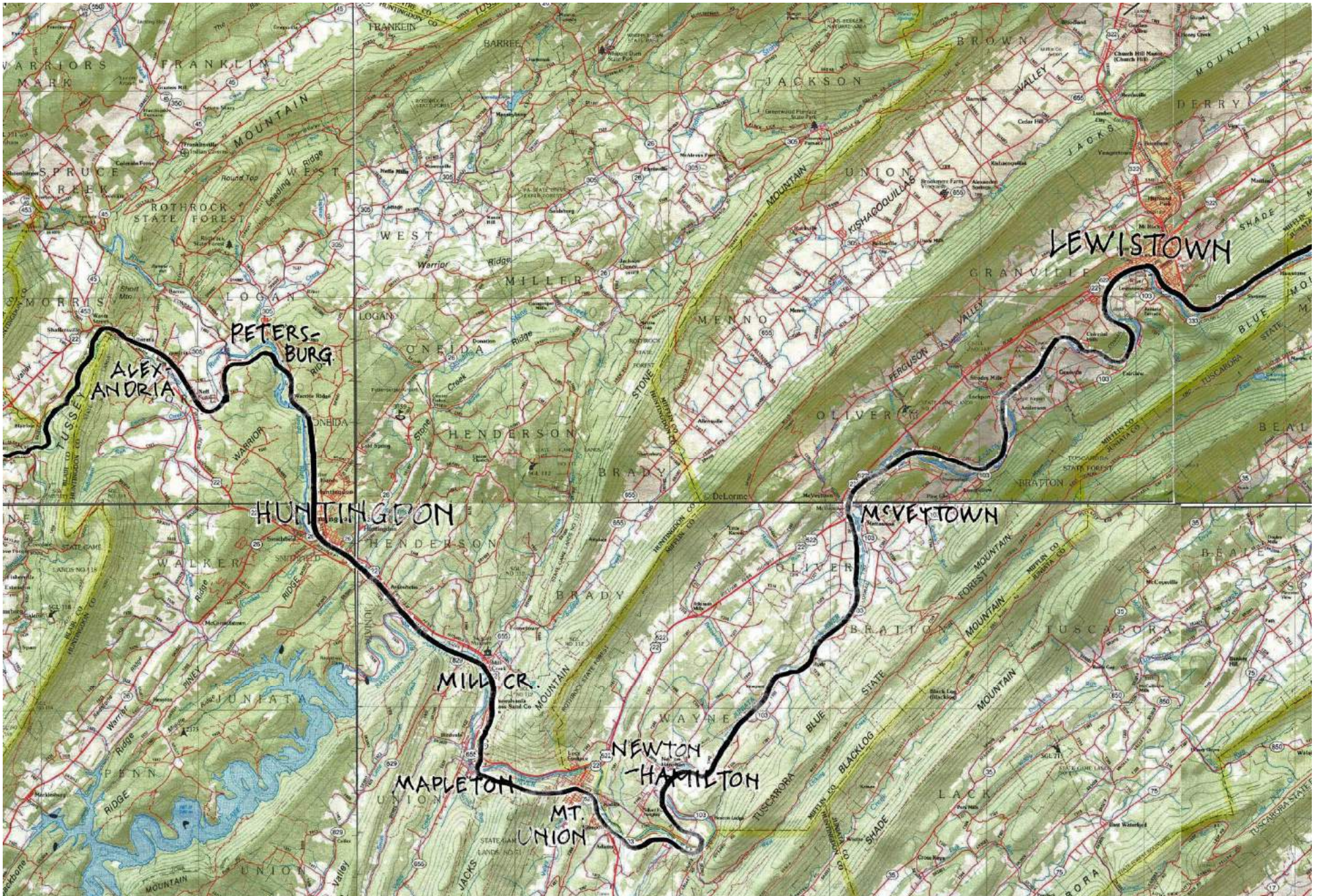
Mifflin County Map 22 Greenways, Trails, and Bicycle Routes



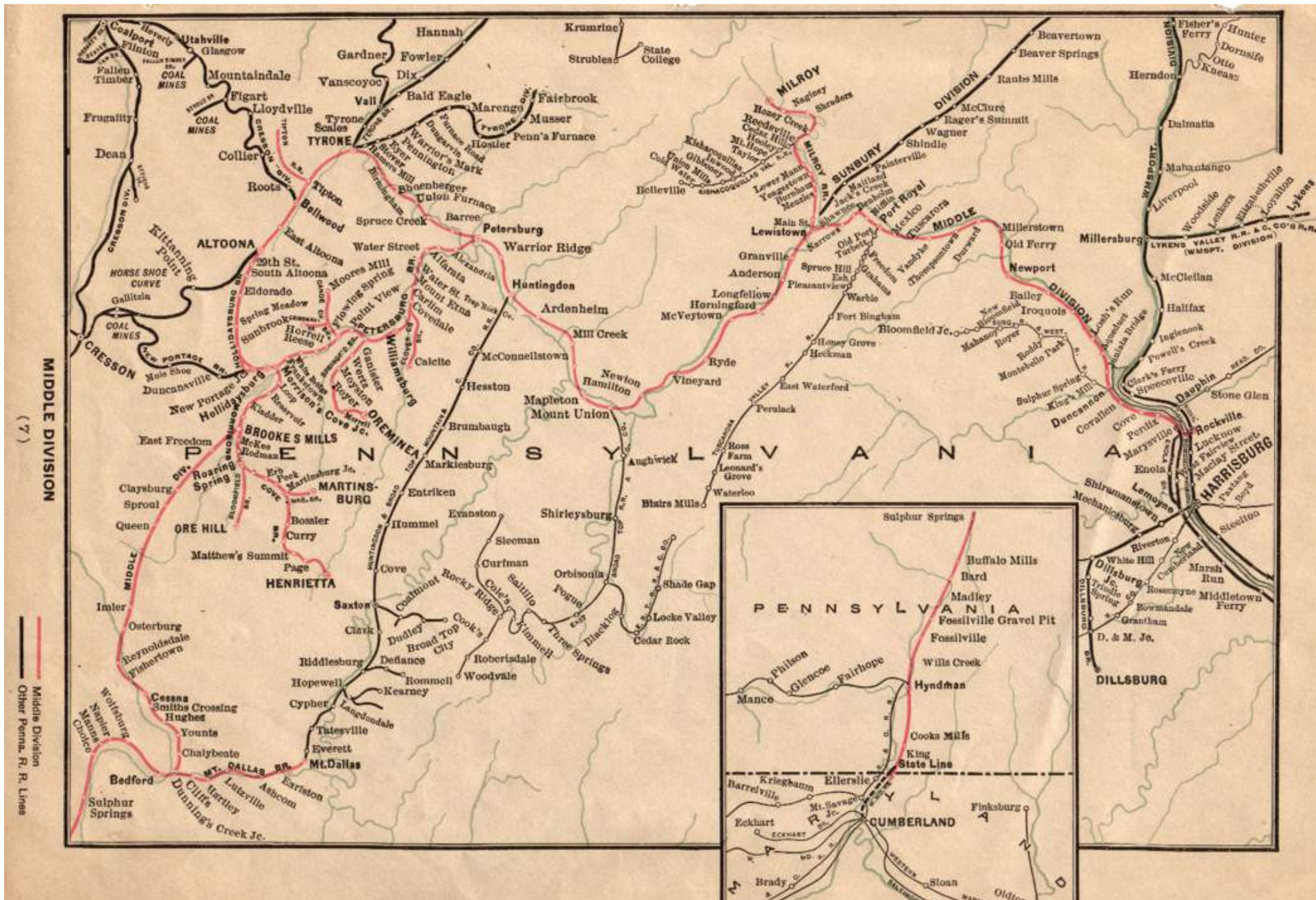
Provided by: Mifflin County GIS Department
NAD 1983 Pennsylvania State Plane North FIPS 3701 Feet
Additional Greenway and Trail Information Provided by Yost Strodoski Mears



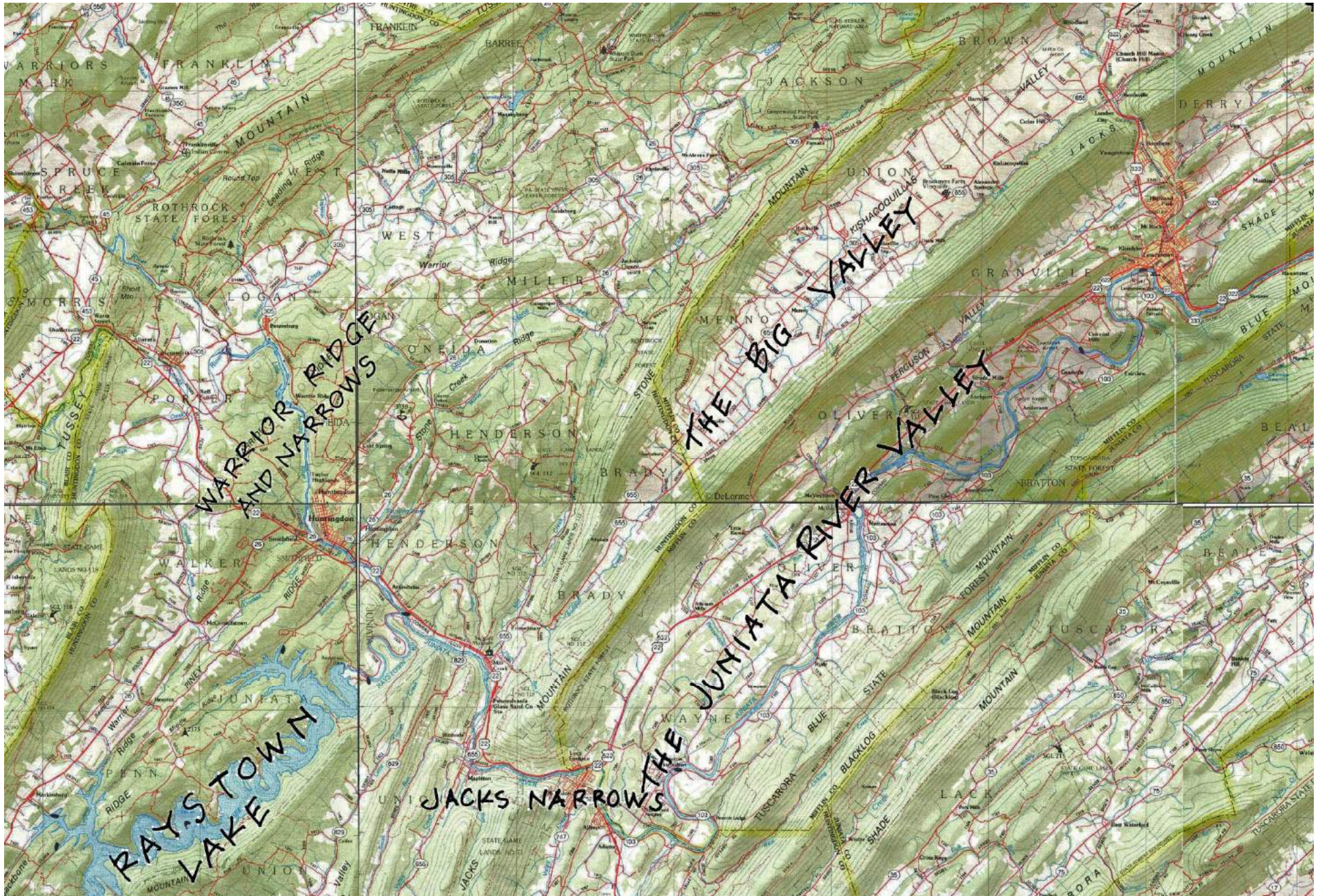
Chapter 6 - 23



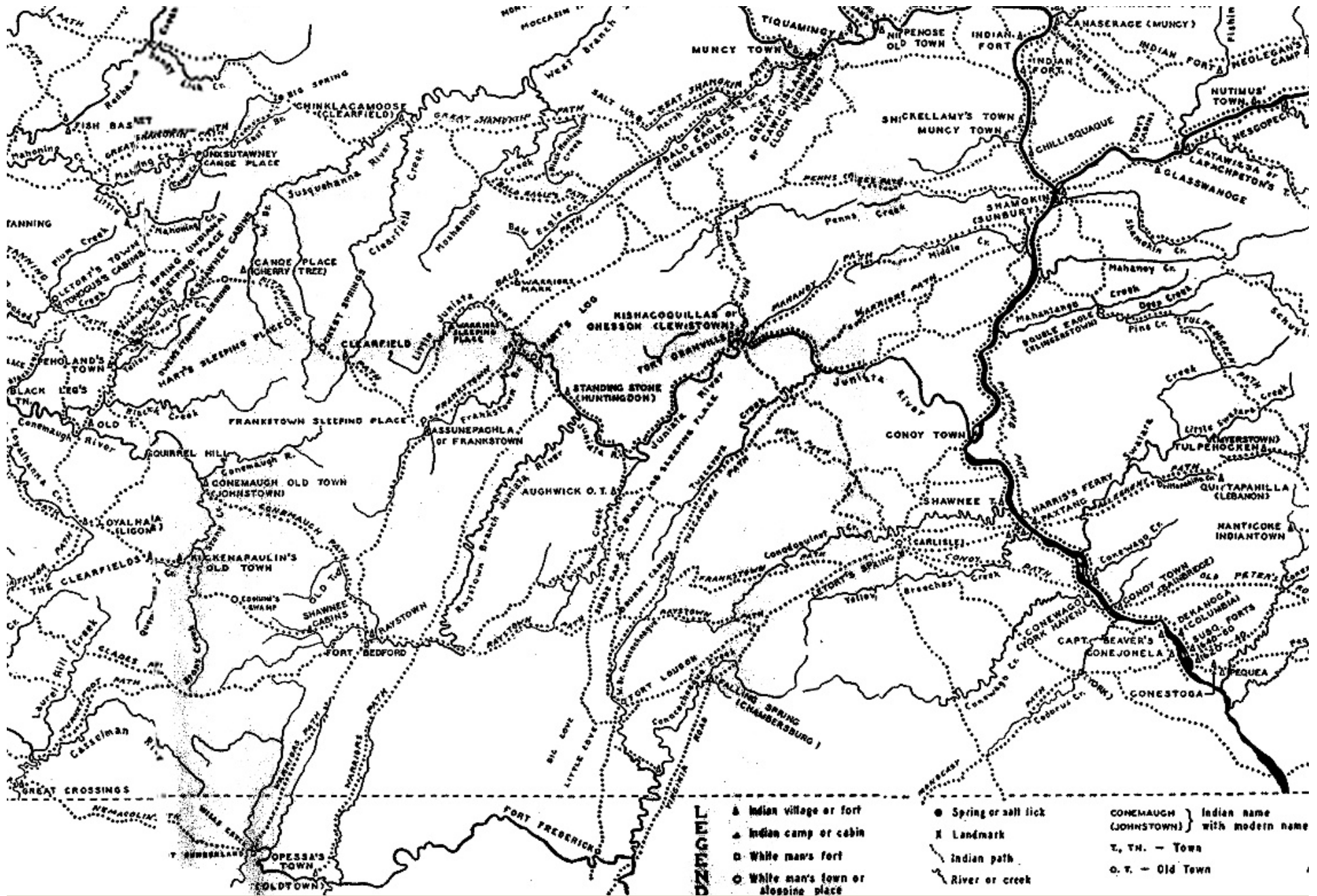
Linking the Canal Towns and Canal Corridor



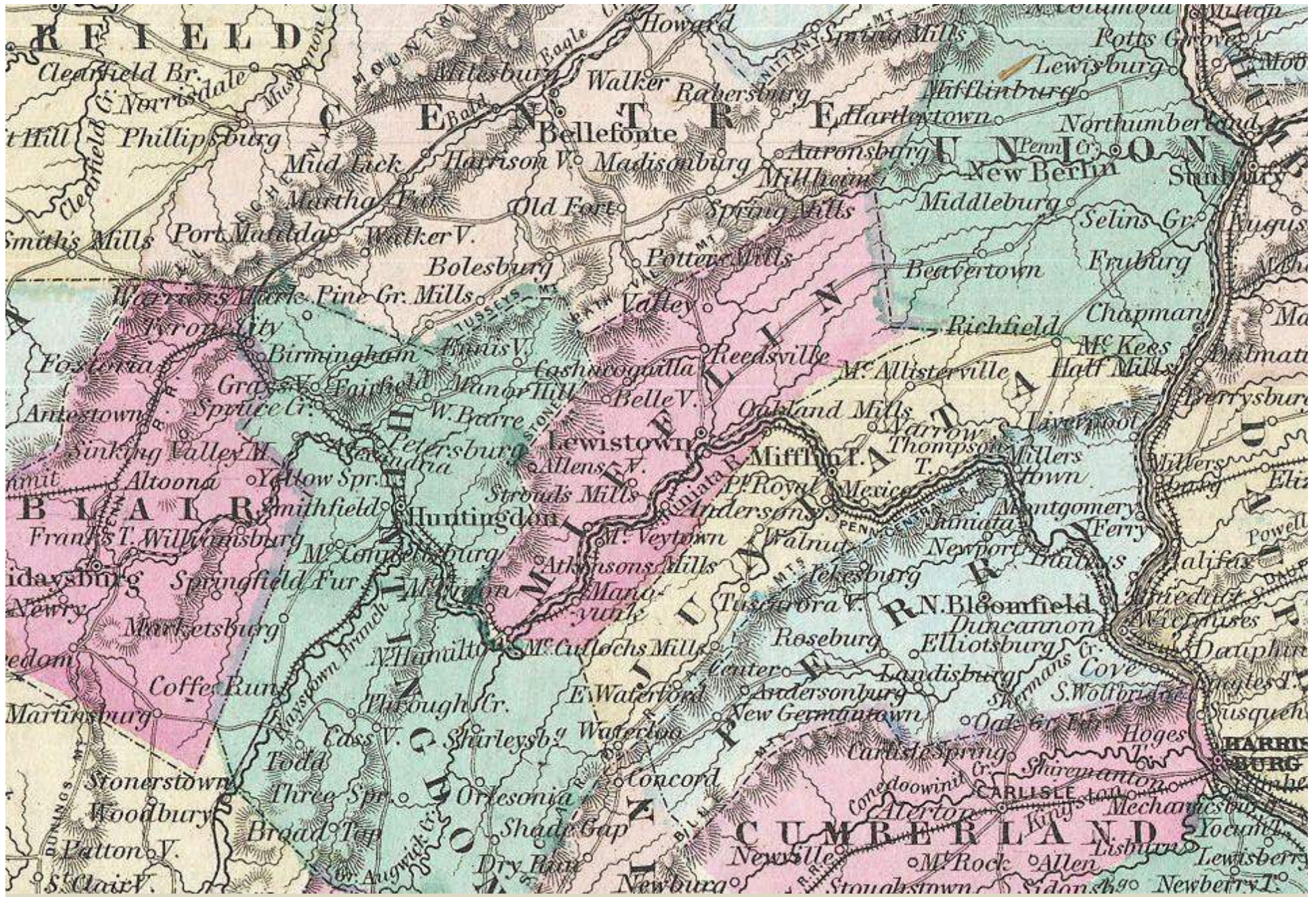
Railroads - Existing and Historic



Natural Beauty, Topography, and Scenic Highlights



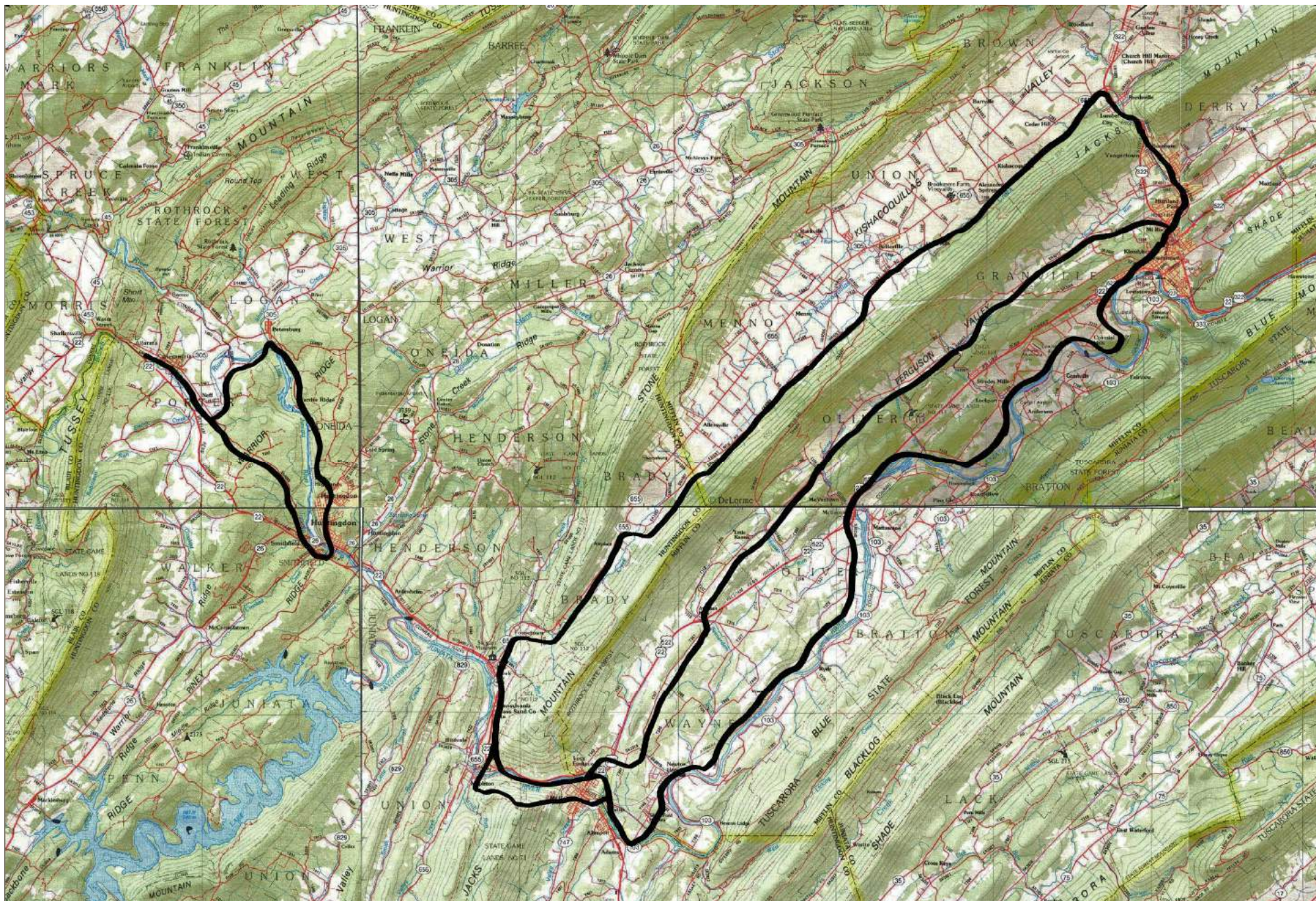
Historic Trails



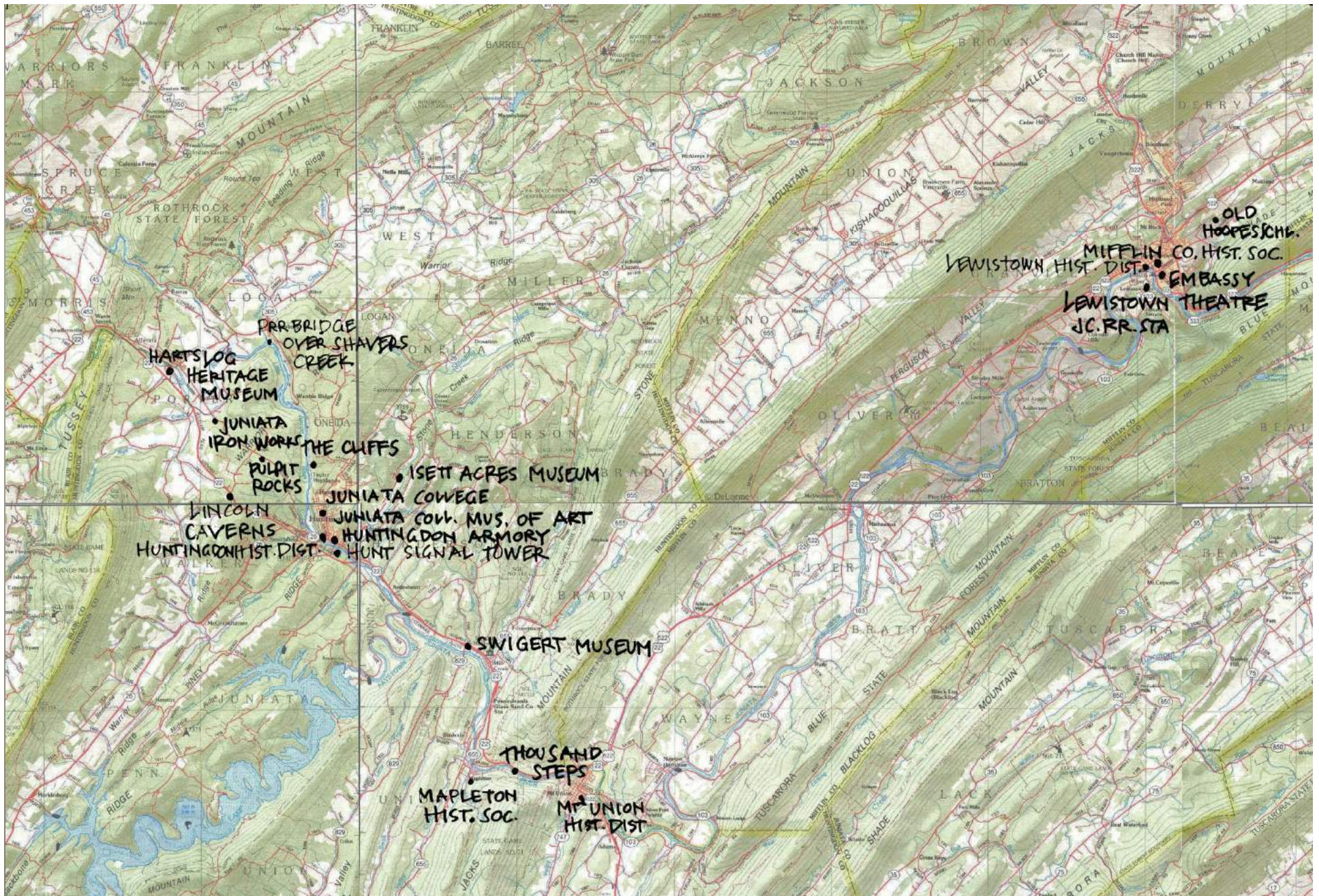
Historic Highways - 1857



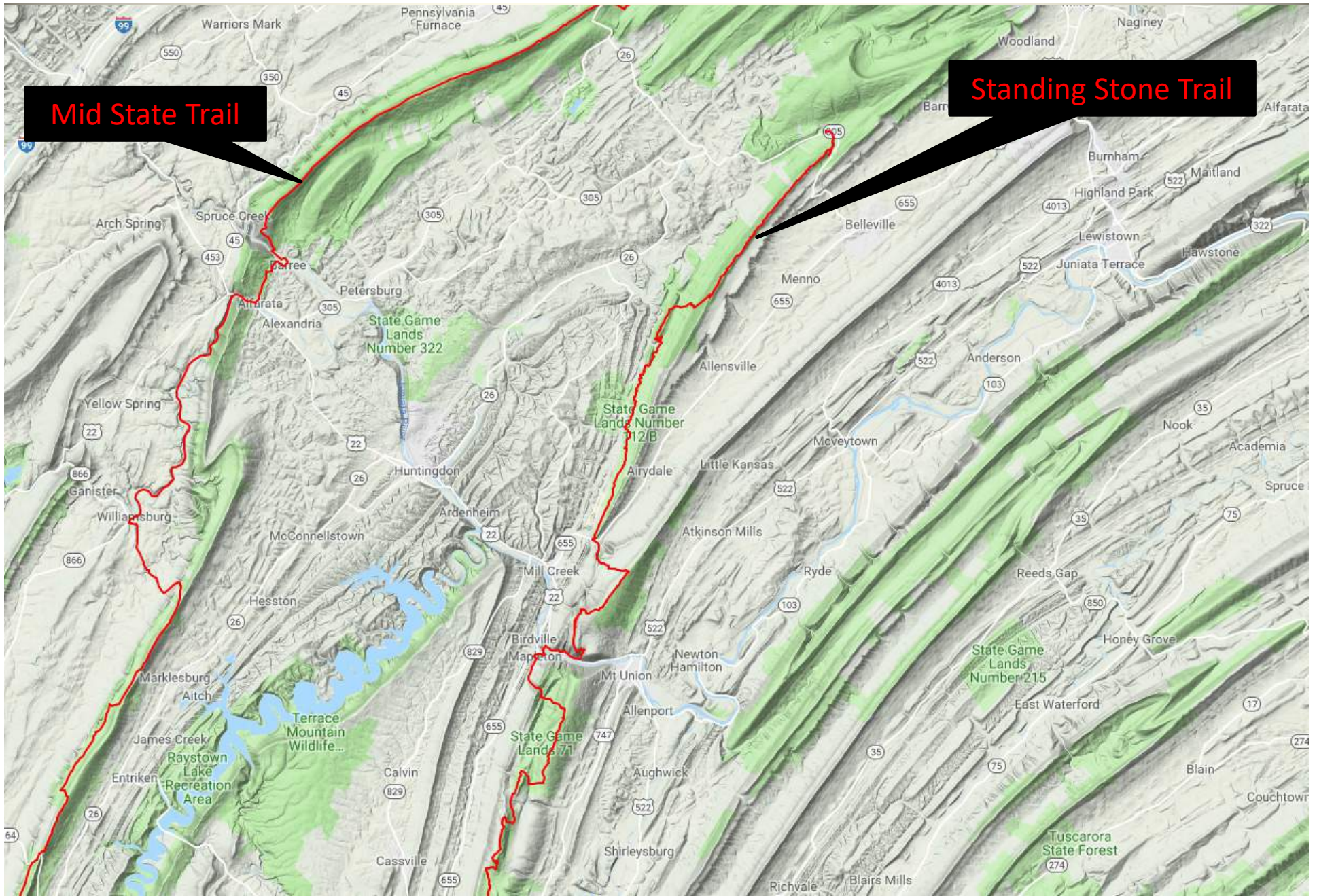
Historic Highways - 1892



Potential Major Spines and Loops



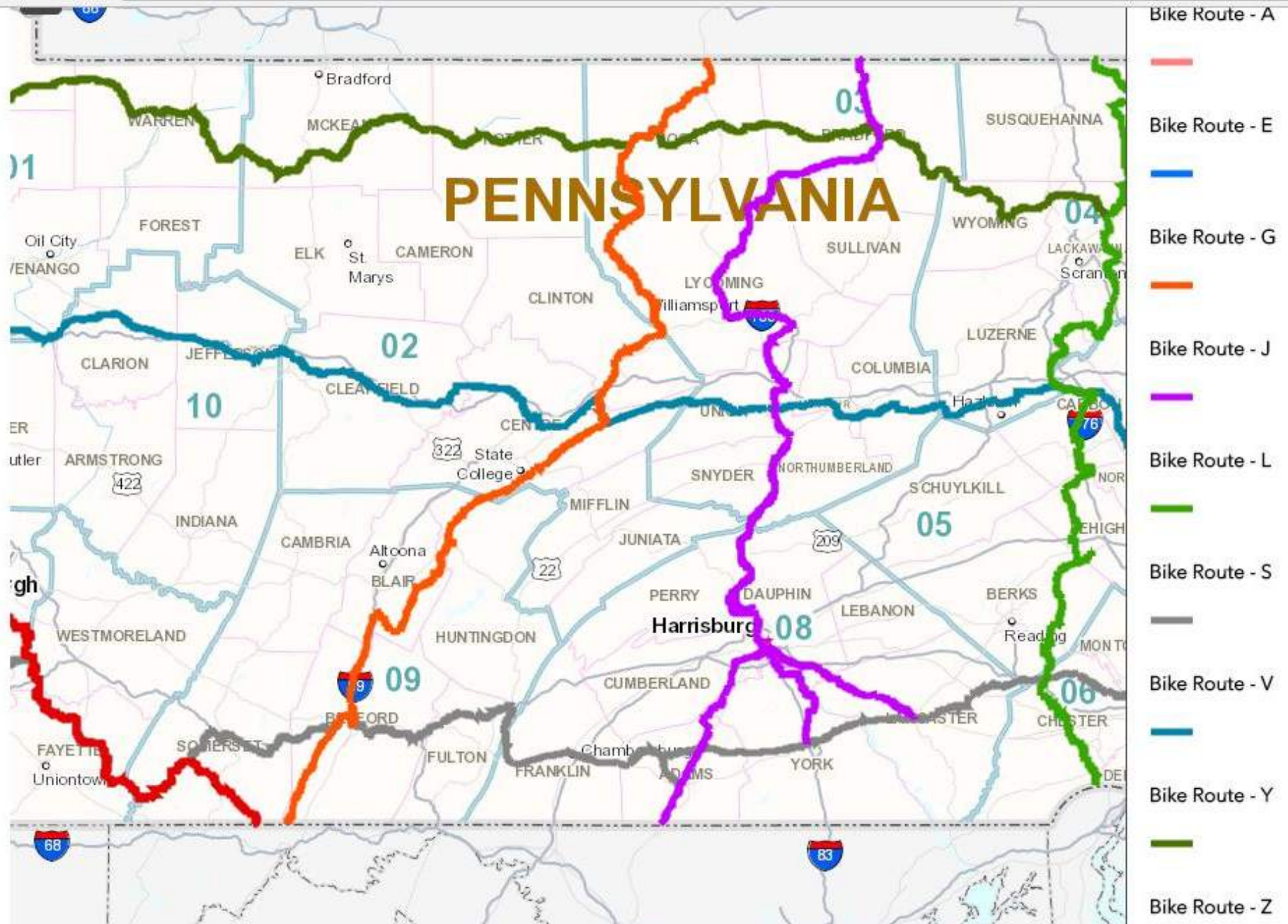
Historic Sites / 911 Sites / Museums / Cultural Sites



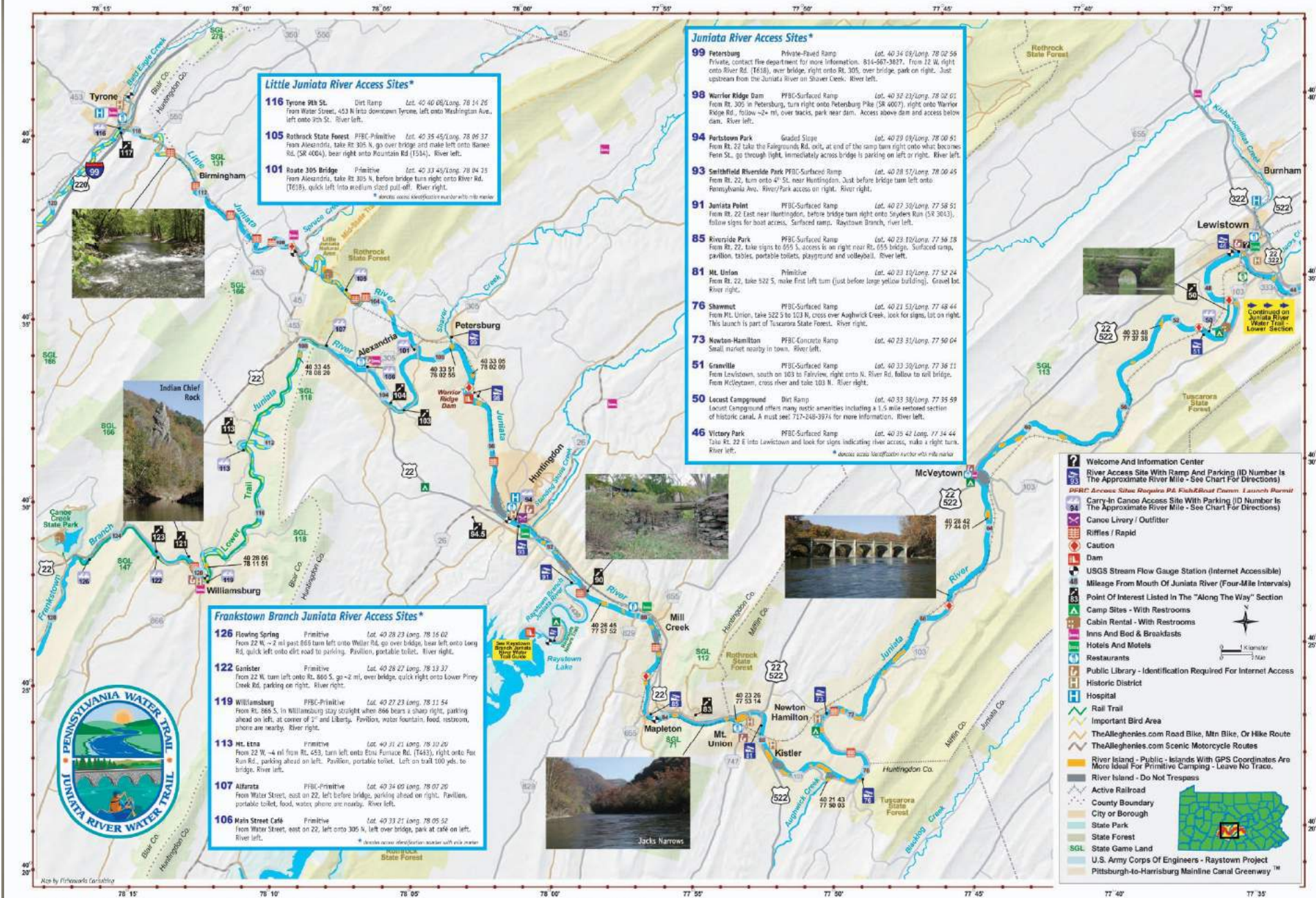
Mid State Trail

Standing Stone Trail

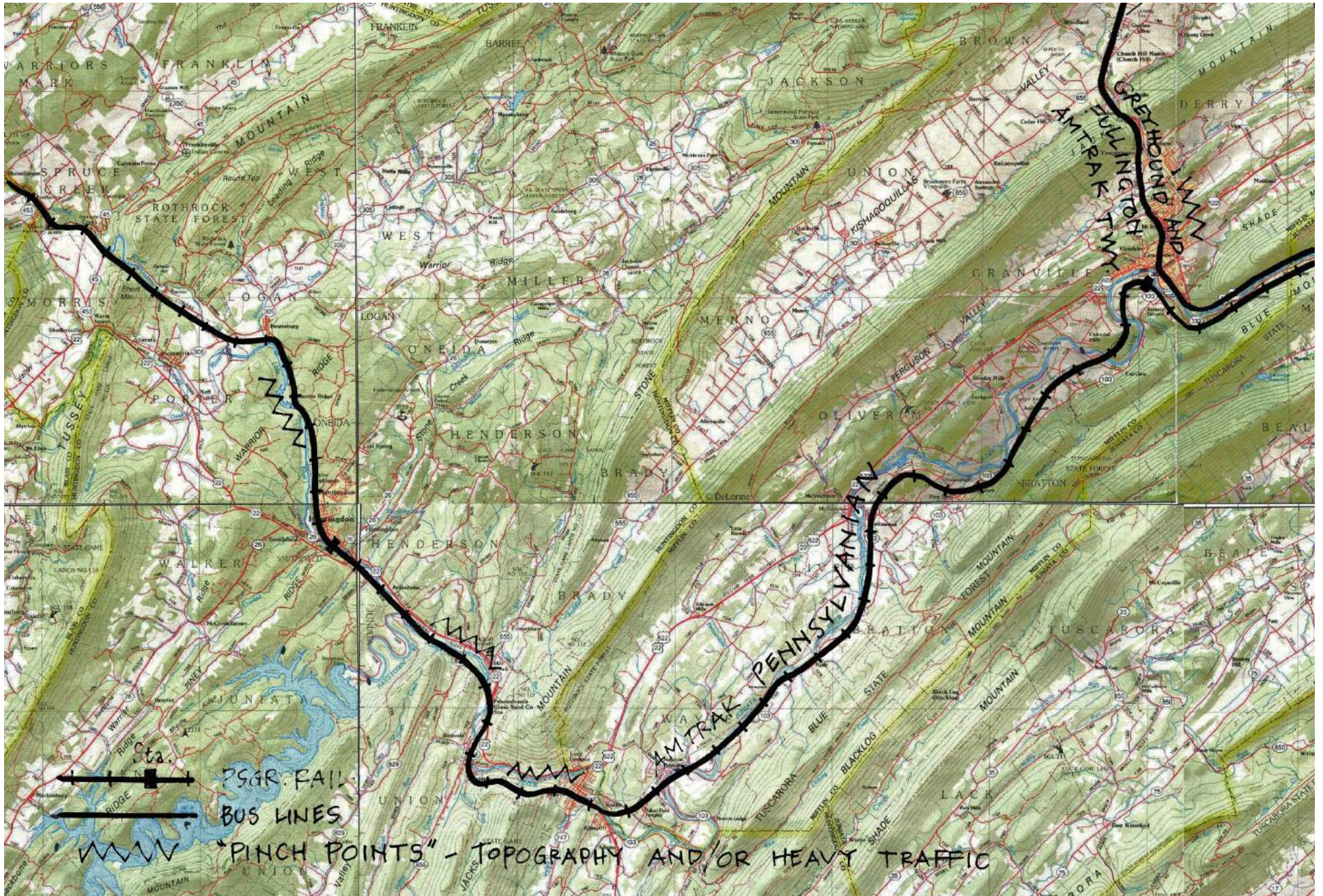
Existing Major Hiking Trails



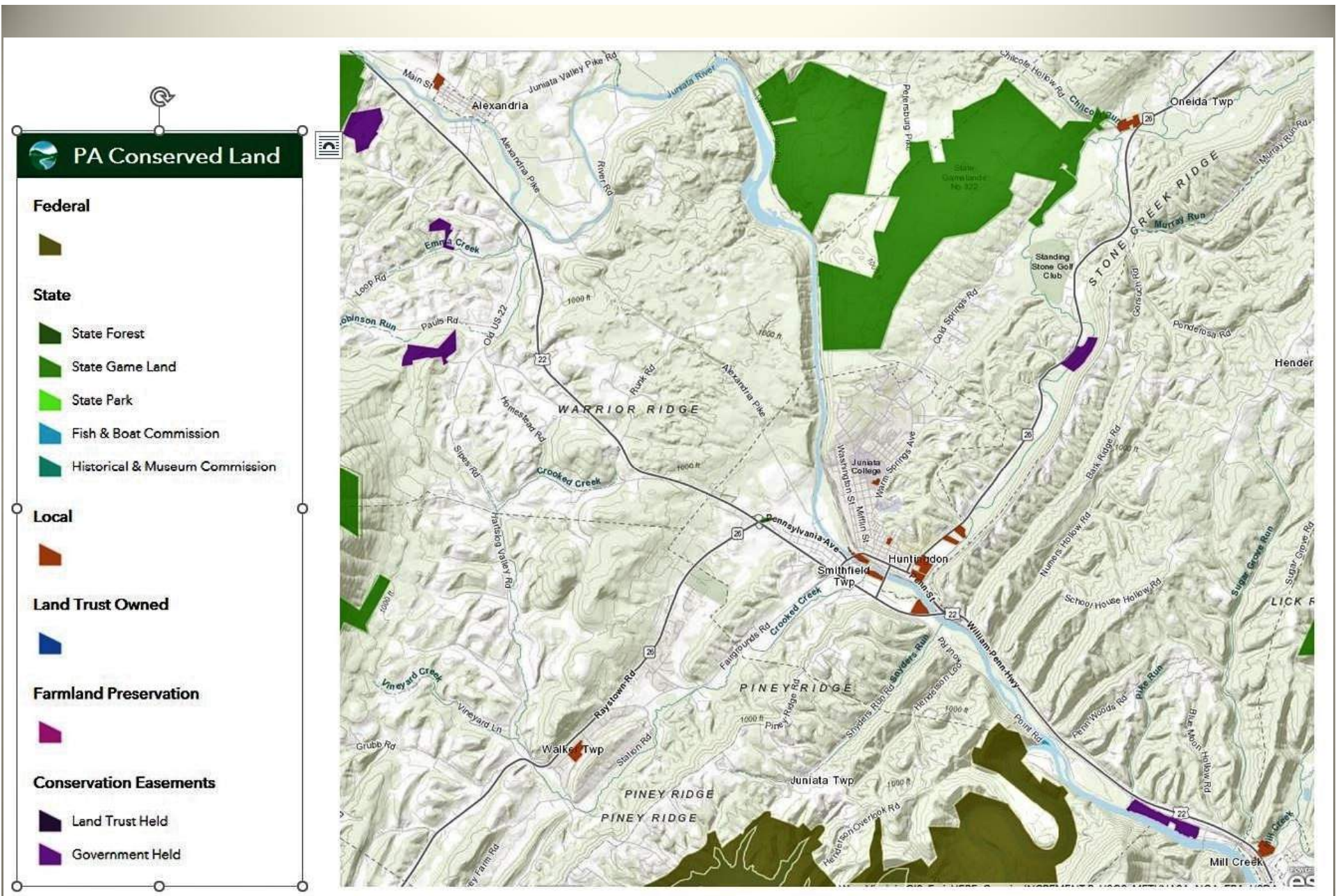
Existing Bicycle PA Routes



Existing Canoe/Kayak Guide



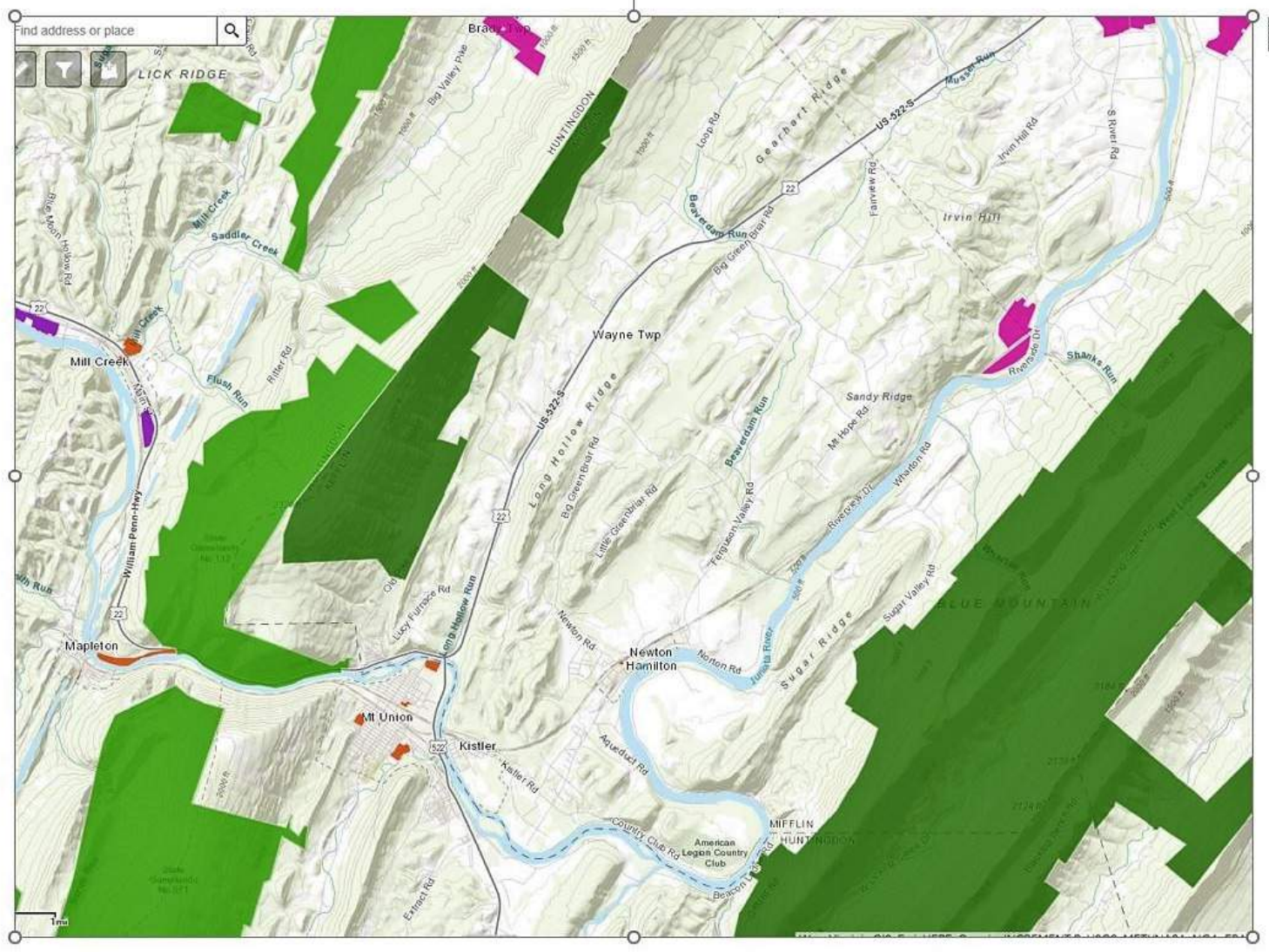
Trail Access and Transportation / Pinch Points / Traffic Problem Areas



Conserved Lands – Alexandria to Huntingdon and Mill Creek

PA Conserved Land

- Federal**
- State**
 - State Forest
 - State Game Land
 - State Park
 - Fish & Boat Commission
 - Historical & Museum Commission
- Local**
- Land Trust Owned**
- Farmland Preservation**
- Conservation Easements**
 - Land Trust Held
 - Government Held



Conserved Lands – Mill Creek to south of McVeytown

PA Conserved Land

Federal



State



State Forest



State Game Land



State Park



Fish & Boat Commission



Historical & Museum Commission

Local



Land Trust Owned



Farmland Preservation



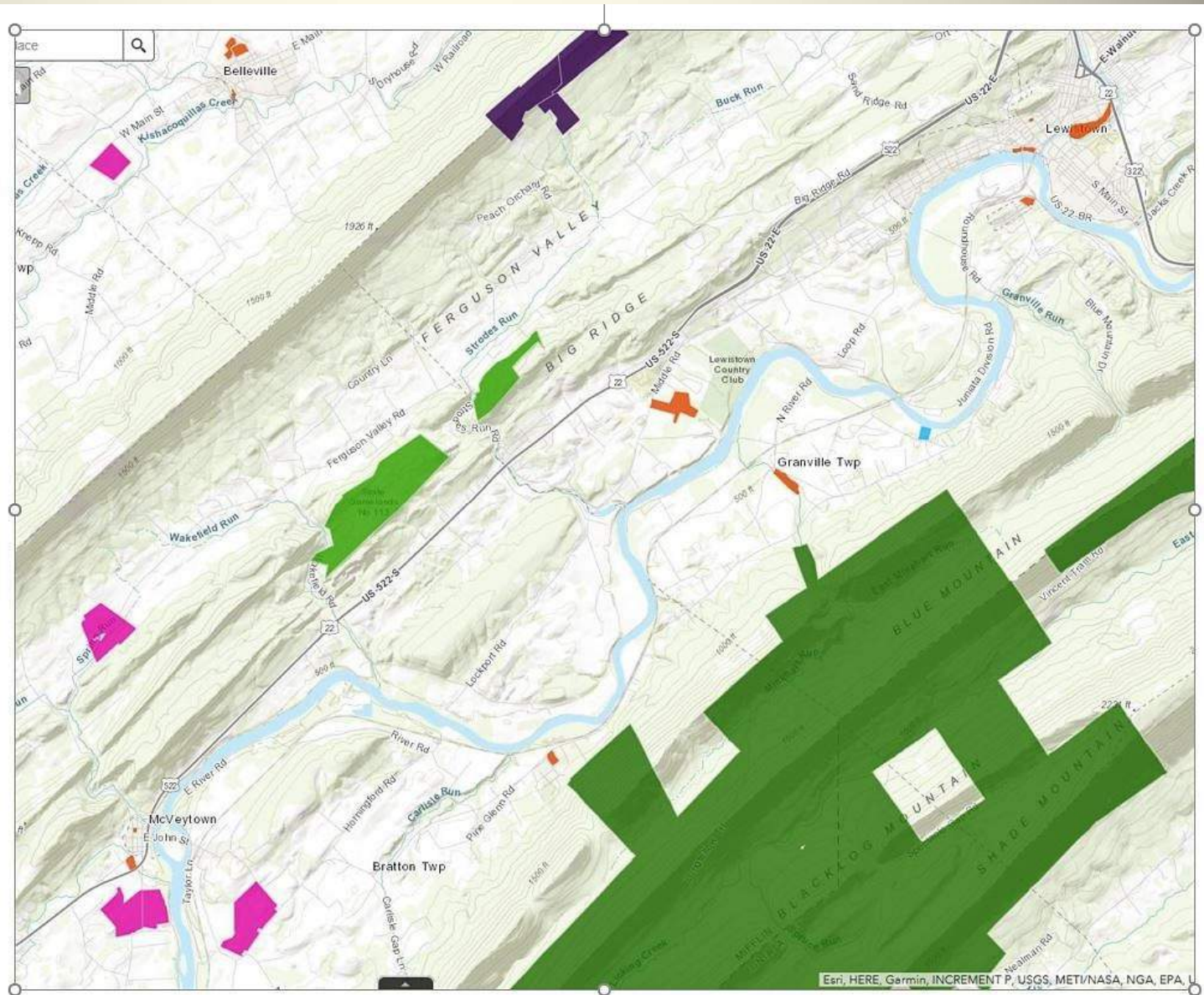
Conservation Easements



Land Trust Held



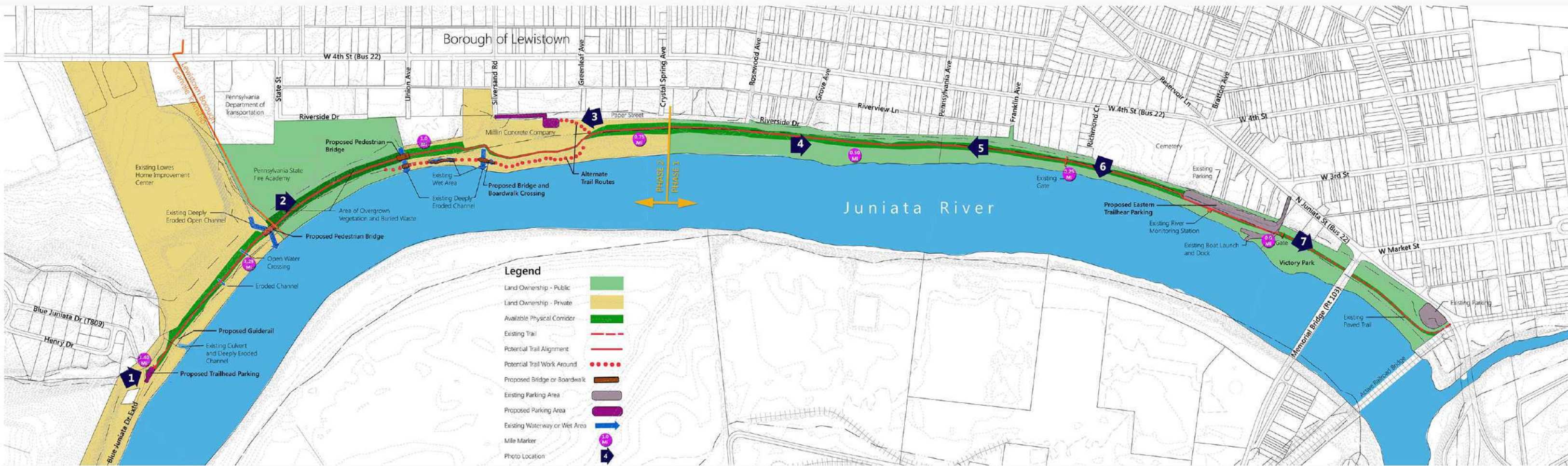
Government Held



Conserved Lands – South of McVeytown to Lewistown



Old William Penn Highway – 1924



Juniata River Trail Feasibility Study

Victory Park to Granville Township
Borough of Lewistown & Granville Township, Mifflin County, Pennsylvania

