

# Planning Developments

◆ Planning Developments is published quarterly by the Mifflin County Planning and Development ◆

No. 62

20 North Wayne Street ◆ Lewistown, PA 17044

December 2014

## Mifflin County Awarded Grant to Fund Boat Public Access Project

Mifflin County recently received a \$125,000 award from the National Park Service Chesapeake Bay Office to design and implement a boat launch along the Juniata River. This grant will match funds received in December of 2013 from the PA Department of Conservation and Natural Resources, also for \$125,000.

This is one of eight financial assistance awards the National Park Service Chesapeake Bay Office made to assist local partners who are implementing projects that provide citizens with recreational access to the Chesapeake and tributary rivers. Funding for public access projects serving local communities comes through the Chesapeake Bay Gateways and Watertrails Network, a congressionally authorized program of the National Park Service. The Chesapeake Bay Office of the National Park Service administers the Gateways Network of partner sites, and also manages two of the nation's nineteen national historic trails – the Star-Spangled Banner and the Captain John Smith Chesapeake National Historic Trail.

When complete, the Juniata River boat access project will include an ADA accessible boat ramp and parking, and ADA compliant stabilized fishing area. The addition of public access in McVeytown plugs a 22 mile gap in river access between Granville Township and Newton Hamilton Borough. This project has been in the planning process for over two years with the help of the Mifflin County Parks and Recreation Council and initial financial support from the Mifflin County Commissioners.

As part of the process, a 25 year lease was signed between Mifflin County and the property owner, whose generosity and cooperation has been essential to make this project even possible. In order to maintain the facility, a corresponding inter-governmental cooperation agreement between Bratton Township, Oliver Township and McVeytown Borough has been developed. This collaboration has been key to moving this project forward.

The final project design will developed by The EADS Group and YSM, Landscape Architects and include securing required permits, developing stormwater management and erosion control plans, construction estimates, bid documentation and construction administration. The total project costs are estimated to be approximately \$250,000 with construction anticipated to begin in summer of 2015.

### Inside this issue:

Mifflin County CDBG Funded Project Progress	2
Access Management	3
Mifflin County Participates in Natural Gas Study	4
Mifflin County Hazard Mitigation Plan	5
2014 CDBG Projects Funded	6
Derry Receives Grant	7

## Mifflin County CDBG Funded Projects Progress

Mifflin County, Derry Township and Brown Township’s projects funded by the Community Development Block Grant (CDBG), and Competitive Grant programs continue to progress towards completion. The funded projects benefit low and moderate income citizens and neighborhoods. The following FFY 2013 projects are either continuations of previously funded projects or new projects in Mifflin County, Derry Township and Brown Township’s CDBG funds.

### Mifflin County CDBG Projects Update

The Juniata Terrace sanitary sewer slip relining project was bid on September 30, 2014. One bid was submitted by and awarded to Tri-State Grouting. Work is anticipated to be completed in late 2014.

### Derry Township CDBG Projects Update

**Dog Park**—During the summer of 2014, the existing pool area at Kish Park was filled in to grade. Final plans are being completed and bidding will take place during the winter allowing construction to begin in the Spring of 2015. The park is anticipated to be completed by June of 2015. On September 17, 2014, volunteers from MCS Bank in Lewistown, as part of the United Way Day of Caring, painted the exterior of the concession stand and existing restrooms. CDBG funds are being used to remove architectural barriers in the existing restrooms and creating ADA parking area and new pathway to the dog park.



### Brown Township CDBG Projects Update

All clearances have been completed allowing 2012 & 2013 projects to move forward. Request for qualifications went out for engineering for removal of architectural barriers at Bender Park, Reedsville Playground and the Main Street sidewalks. It is anticipated that plans and specifications will be completed early spring and construction will happen in spring and summer 2015.

### HOME Program

In July of 2014, DCED contacted our office regarding receiving additional funding under the 2010 HOME program. A total of \$350,000 was allocated to the county and approximately 12—13 homes should be able to be rehabilitated based on qualifications. Only certain communities receive this additional funding.

## Juniata Terrace Update

At the end of March, the Juniata Terrace Borough and its residents suffered through a devastating fire that severely damaged and affected a number of homes in the 300 block of Terrace Boulevard. Since that time, a local developer has purchased the burnt out structures and is currently renovating the homes. Construction is similar to existing structures.



Juniata Terrace Fire  
March 27, 2014

Juniata Terrace Construction October 28, 2014



## Access Management

Staff from the Mifflin County Planning and Development Department recently attended a PennDOT workshop on Access Management. The following article was developed with the assistance of Angela Watson, formerly of Parsons Brinckerhoff and now with PennDOT.

What is access management? Access management uses development standards to control the location, spacing, design, and operation of driveways and intersecting streets along major transportation corridors. This is done primarily through local subdivision and land development ordinances (SALDO), which require new land development and the redevelopment of properties to provide access (driveways) that minimizes potential conflicts, reduces congestion and improves safety along a corridor. Local governments can require access management techniques on both locally-owned roads and state roads, so long as the requirements are at least as stringent as PennDOT's requirements.

PennDOT recently updated its Access Management Handbook (PennDOT Publication 574), which contains model ordinance language for municipalities that choose to manage access along their roads and streets. The Access Management Handbook offers local government three distinct tiers of access management for consideration:

Tier 1: Access Management Techniques for Parcels

Tier 2: Access Management Techniques for Roadways

Tier 3: Comprehensive Traffic Planning Techniques

The Tier 1 techniques are low-cost, easy-to-implement solutions for new development or redevelopment.

These techniques include limiting the number of driveways per property, driveway design (including shared driveways), stopping sight distance, and corner clearance. Tier 2 utilizes improvements such as auxiliary lanes, signalized intersection spacing, and driveway spacing along the corridor. Tier 3 includes the use of medians, frontage/service roads, and other implementation tools such as the Official Map. The Handbook is available on PennDOT's website.

The 2014 Mifflin County Comprehensive Plan identifies access management as an important and effective tool to promote highway safety. These techniques can be easily incorporated within the municipal SALDO and are best applied to corridors before they are fully developed. However, access management tools can also be effective along roads and highways as they are redeveloped.

At least 8 municipalities in Mifflin County have a limited form of access management by their adoption of a driveway permit system. When used correctly, this provides a means to insure safe access to municipal roads by establishing minimum site distances and clearances. It can also be used to anticipate potential stormwater issues.

Many communities can benefit from applying the Tier 1 or Tier 2 techniques along major corridors. Municipalities without access management provisions should consider adopting them and municipalities with limited driveway permit standards should evaluate them to insure they meet their current and ongoing needs. Copies of the updated Access Management Handbook (Pub 574) are available at the PennDOT website, <http://www.dot.state.pa.us/Internet/Bureaus/pdBOS.nsf/FormsAndPubsHomePage?OpenFrameSet>

## Mifflin County Participates in Natural Gas Study

In 2013 the Mifflin County Board of Commissioners agreed to participate in a Regional Gas Utilization Initiative Study in collaboration with Centre and Clinton Counties. The study is being conducted by SEDA-COG to help improve natural gas service and infrastructure in the three county area. The project is being funded with assistance from the U.S. Economic Development Administration, the three counties and contributions from the Mifflin County Industrial Development Corporation (MCIDC) and Standard Steel. The study will evaluate how to improve access to natural gas service, examine options for developing an administrative body such as a municipal authority or cooperative to help fund and expand natural gas service for the three counties and review funding sources to facilitate natural gas service expansion. Outcomes from the study will include recommendations on opportunities for initiating or expanding natural gas utility service at existing industrial sites and residential areas, identifying at least one potential demonstration project in each of the three counties and determining the infrastructure needed to provide natural gas fueling areas for private and public vehicle fleets.

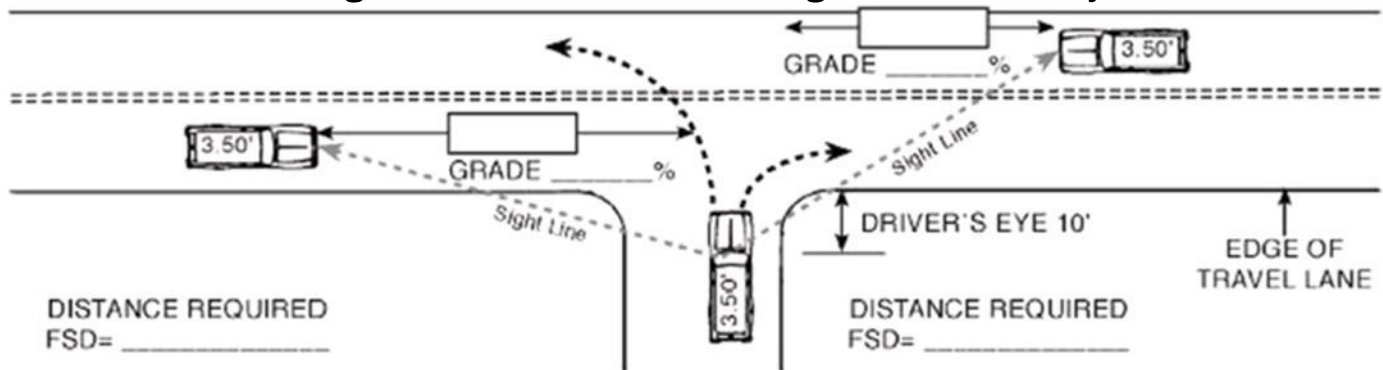
Mifflin County has a wide variety of types of areas that may be suitable for new natural gas service, including residential, commercial and industrial sites. The study calls for targeting areas for investment that may enhance the attractiveness and cost effectiveness of providing service. The Mifflin County Planning and Development Department and the Mifflin County GIS Department have been working with SEDA-COG in collaboration with MCIDC and Standard Steel to identify priority areas that may be best suited for new or expanded natural gas services. Potential sites will be examined for costs in developing natural gas service as well as exploring options for funding these services. The project completion date is expected to be March of 2015.

For more information on this project, please contact Don Kiel at SEDA-COG at [dkiel@seda-cog.org](mailto:dkiel@seda-cog.org).

### Access Management (Continued)

Since access management and PennDOT’s Highway Occupancy Permit (HOP) are closely linked, it is important to inform the PennDOT District office if you decide to adopt a local access management ordinance, or modify your SALDO to include access management requirements. This will allow the District to be aware that developers seeking an HOP along a state road will also need to comply with local access management re-

#### Sight Distances to the Left & Right of the Driveway



THE MAXIMUM LENGTH OF ROADWAY ALONG WHICH A DRIVER AT A DRIVEWAY LOCATION CAN CONTINUOUSLY SEE ANOTHER VEHICLE APPROACHING ON THE ROADWAY.

## Mifflin County Hazard Mitigation Plan

On November 13, 2014, the Mifflin County Commissioners adopted the Mifflin County Hazard Mitigation Plan. This plan adoption completes a two year process to update the last plan adopted in 2008.

As part of the process to undertake and complete the Hazard Mitigation Plan update, a grant was secured by the County in September 2012 through the Federal Emergency Management Agency (FEMA) and the Pennsylvania Emergency Management Agency (PEMA). In order to prepare the plan, Mifflin County solicited the services of a consultant. In December of 2012, Mifflin County selected Delta Development Group, Inc. to provide this service.

Since the completion of the last plan in 2008, Mifflin County has been required by PEMA and FEMA to perform an annual evaluation of the Plan and update changes that have occurred. However, every five years the County is required to undertake a complete plan update. The Plan update addresses and expands upon how the previous plan addressed the identified natural hazards and human caused hazards. The purpose of the update is to review current data pertaining to hazards affecting the County, costs associated from any hazard occurrence, the existing capacity to manage hazards and to identify future actions to mitigate such hazards. Since the plan was adopted by Mifflin County, it will now be submitted for adoption individually by each of the sixteen municipalities in the County. Individual adoption of the Plan by municipalities is critical for their eligibility to participate in FEMA hazard mitigation assistance programs. Otherwise each municipality would have to develop their own individual hazard mitigation plan and get FEMA approval.

As part of the planning process a Steering Committee was established by the County that included municipal representation, the Mifflin County School District, the Juniata Valley Chamber of Commerce, the Juniata Valley Behavior and Development Services, the County Planning and Development Department, the County Public Safety Office, an emergency services representative (FAME) and Geisinger Lewistown Hospital. These stakeholders provided input in the Plan's development.

During the Plan's preparation, several public meetings were held along with outreach opportunities to garner public input and support for the project. As a result, all sixteen municipalities in Mifflin County participated in the development of the Plan. The final public meeting to review and comment on the draft Hazard Mitigation Plan was held on March 6, 2014. The Plan was then sent to PEMA to review and then to FEMA for final review and comment. As a result, on September 30, 2014, Mifflin County received an Approval Pending Adoption letter from FEMA. The Approval Pending Adoption letter states that the Plan met all federal requirements for a Hazard Mitigation Plan and this authorized the County to adopt the Plan. However, full recognition of the Plan is pending the adoption of the Plan by at least one municipality. Outreach for the first municipality to adopt the Plan is already moving forward. The Approval Pending Adoption letter also gives each municipality one year (September 2015) to adopt the Plan. All municipalities are being asked to approve this Plan. For questions about the Plan, please contact William Gomes at the Planning Office.

## 2014 Community Development Block Grant (CDBG) Funded Projects

The Planning and Development Department received 6 funding requests for Mifflin County's 2014 Community Development Block Grant (CDBG) Program. The first public hearing was held on September 25, 2014 for applicants to present their proposals to the Mifflin County Planning Commission. In addition to the presentations, the public hearing also provided an opportunity to receive citizens' views, comments, and suggestions for consideration by the Planning Commission for the 2014 CDBG application. A second public hearing was held on October 23, 2014 by the Mifflin County Commissioners when they approved 3 of the 6 applications received.

Applicant	Project Information	CDBG Activity	Recommended Funding Amount
Mifflin-Juniata Dental Clinic	Equipment Purchase (third year of fair share)	Public Service	\$11,933
SEDA-COG Housing Development Corporation—Mann Edge Terrace Phase II	Land acquisition for property adjacent to Phase 1	Housing, Public Facilities and Economic Development	\$101,215
Armagh Township	Stormwater management and roadway improvements (Oak Street—Potlicker Flat Area Milroy)	Housing, Public Facilities, and Economic Development	\$67,500
Mifflin County Planning and Development	Program Administration	Program Administration	\$39,655

### Derry Township

The Derry Township Supervisors held their second public hearing for their 2014 CDBG funds on November 3, 2014 and voted to fund the following projects:

Applicant	CDBG Services	Funding
Mifflin Juniata Dental Clinic	Public / Health Services (3 <sup>rd</sup> Year of fair share equipment purchase)	\$3,900.00
Habitat for Humanity	New housing construction for low-moderate income house hold	\$10,000.00
522 North Water Line Extension Project	Housing rehabilitation – individual water lateral connections	\$8,736.00
Pinewood Road	Engineering, Road Resurfacing, Stormwater Management	\$38,269.00
Sawmill Road	Engineering, Road Resurfacing, Stormwater Management	\$3,845.00
Rosemont Avenue	Engineering, Road Resurfacing, Stormwater Management	\$24,110.00
County Administration	Program Administration	\$19,506.00
TOTAL CDBG Funding		\$108,366.00

Derry Township application will be submitted to the PA DCED by January 2, 2015.

### Brown Township

The Brown Township Supervisors held their second public hearing on October 20, 2014 and contemplated funding two projects with their 2014 CDBG funds. The first project is the removal of the blighted mobile home and foundations in Lumber City, while the second project is street reconstruction and stormwater repairs in Lumber City on East and West Railroad Street. Brown Township application will be submitted to the PA DCED by January 2, 2015.

## Derry Township Receives Grant

On September 17, 2014 the Derry Township Supervisors were awarded a Department of Community and Economic Development Community Development Block Grant Competitive award of \$422,093. These funds will be used to assist with providing potable water and improved fire protection by installing approximately 8,200 linear feet, of eight (8") inch main line and five (5) new fire hydrants from Crossover Drive to the Derry/ Decatur Township line. The total project costs are approximately \$796,926. This grant was a collaborative effort involving the Derry Township Supervisors, the Mifflin County Planning and Development Department and the Municipal Authority of the Borough of Lewistown (MABL).

The Municipal Authority of the Borough of Lewistown (MABL) was created in 1945 and provides potable drinking water, through a complex maze of approximately 300 miles of transmission and distribution lines. Additionally MABL provides fire protection through nearly 580 fire hydrants throughout Mifflin County. There are approximately sixty-three (63) households who would benefit from this project by hooking up to the municipal water supply system, thereby eliminating their reliance on private well systems. The owner of the Hillside Terrace mobile home park, is currently under a PA DEP consent order to upgrade the private water system. The MABL will be starting the work sometime in early spring of 2015. Residents within one-hundred and fifty (150') feet adjacent to the water line will be required to hook onto the municipal system.

## 2014 Mifflin County Community Development Block Grants (CDBG)



Mifflin - Juniata Dental Clinic



Armagh Township - Oak Street



Mann Edge Terrace Phase II

**MIFFLIN COUNTY PLANNING  
AND DEVELOPMENT DEPARTMENT**

20 North Wayne Street

Lewistown, PA 17044

Phone: (717) 242-0887

Fax: (717) 242-5460

Email: mcplanning@co.mifflin.pa.us



*Developing a Better Community*

*Contact the Planning and  
Development Department for  
planning services offered.*

**Staff Members**

**William Gomes, AICP**  
*Director*

**James Lettiere, AICP**  
*Community Development  
Administrator / Assistant Director*

**Doug Marks**  
*Housing Rehabilitation  
Specialist/Construction Manager*

**Jodie Barger**  
*CDBG Fiscal Manager*

**Nicole Singer**  
*Office / Grants Manager*

**Donna Baer**  
*Fiscal Assistant*

**Upcoming Events:**

**Planning Commission Meetings** - December 18, 2014, January 22, 2015,  
February 26, 2015, March 26, 2015

**Subdivision Review Meetings**—December 11, 2014, January 15, 2015, Feb-  
ruary 19, 2015, March 19, 2015

Save the date! - Mifflin County Planning Commission Annual Dinner  
Thursday, April 9, 2015  
More details coming soon

